

Glycogen synthase 2 Rabbit pAb

Catalog Number: bs-3989R

Target Protein: Glycogen synthase 2

Concentration: 1mg/ml

Form: Liquid

Host: Rabbit

Clonality: Polyclonal

Isotype: IgG

Applications: WB (1:500-2000)

Reactivity: Mouse (predicted:Human, Rat, Rabbit, Pig, Dog, Horse)

Predicted MW: 81 kDa

Entrez Gene: 2998

Swiss Prot: P54840

Source: KLH conjugated synthetic peptide derived from human Glycogen synthase 2: 621-703/703.

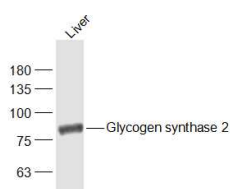
Purification: affinity purified by Protein A

Storage: 0.01M TBS (pH7.4) with 1% BSA, 0.02% Proclin300 and 50% Glycerol.

Shipped at 4°C. Store at -20°C for one year. Avoid repeated freeze/thaw cycles.

Background: Glycogen synthase catalyzes the rate-limiting step in glycogen synthesis. Its activity is regulated by a complex phosphorylation-dephosphorylation mechanism and by allosteric stimulators and inhibitors. Two isozymes of synthase, a skeletal muscle type (Glycogen synthase 1 - GYS1) and a liver type (Glycogen synthase 2 - GYS2), have been identified.

VALIDATION IMAGES



Sample: Liver (Mouse) Lysate at 40 ug Primary: Anti-Glycogen synthase 2 (bs-3989R) at 1/1000 dilution
Secondary: IRDye800CW Goat Anti-Rabbit IgG at 1/20000 dilution Predicted band size: 81 kD Observed band size: 81 kD

PRODUCT SPECIFIC PUBLICATIONS

[IF=0] Scheffler et al. Gain of function AMP-activated protein kinase γ 3 mutation (AMPK γ 3R200Q) in pig muscle increases glycogen storage regardless of AMPK activation. (2016) Physiol.Re. 4 WB ; Pig . 27302990