

bs-3984R**[Primary Antibody]****GALT Rabbit pAb****BioSS**
ANTIBODIES

www.bioss.com.cn

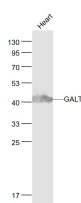
sales@bioss.com.cn

techsupport@bioss.com.cn

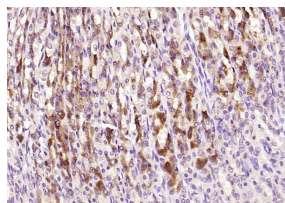
400-901-9800

— DATASHEET —

Host: Rabbit	Isotype: IgG	Applications: WB (1:500-2000)
Clonality: Polyclonal		IHC-P (1:100-500)
GeneID: 2592	SWISS: P07902	IHC-F (1:100-500)
Target: GALT		IF (1:100-500)
Immunogen: KLH conjugated synthetic peptide derived from human GALT: 251-350/379.		Reactivity: Mouse, Rat (predicted: Human, Cow)
Purification: affinity purified by Protein A		
Concentration: 1mg/ml		Predicted MW.: 43 kDa
Storage: 0.01M TBS (pH7.4) with 1% BSA, 0.02% Proclin300 and 50% Glycerol. Shipped at 4°C. Store at -20°C for one year. Avoid repeated freeze/thaw cycles.		Subcellular Location: Cytoplasm
Background: GALT (Galactose 1 phosphate uridyl transferase) catalyzes the second step of the Leloir pathway of galactose metabolism, namely the conversion of UDP glucose + galactose 1 phosphate to glucose 1 phosphate + UDP galactose. The absence of this enzyme results in classic galactosemia in humans and can be fatal in the newborn period if lactose is not removed from the diet. The pathophysiology of galactosemia has not been clearly defined.		

— VALIDATION IMAGES —

Sample: Heart (Mouse) Lysate at 40 ug Primary:
Anti- GALT (bs-3984R) at 1/1000 dilution
Secondary: IRDye800CW Goat Anti-Rabbit IgG at
1/20000 dilution Predicted band size: 43 kD
Observed band size: 43 kD



Paraformaldehyde-fixed, paraffin embedded (rat stomach); Antigen retrieval by boiling in sodium citrate buffer (pH6.0) for 15min; Block endogenous peroxidase by 3% hydrogen peroxide for 20 minutes; Blocking buffer (normal goat serum) at 37°C for 30min; Antibody incubation with (GALT) Polyclonal Antibody, Unconjugated (bs-3984R) at 1:200 overnight at 4°C, followed by operating according to SP Kit(Rabbit) (sp-0023) instructions and DAB staining.