

---

## MMP9 Rabbit pAb

Catalog Number: bs-4593R

Target Protein: MMP9

Concentration: 1mg/ml

Form: Liquid

Host: Rabbit

Clonality: Polyclonal

Isotype: IgG

Applications: WB (1:500-2000), IHC-P (1:100-500), IHC-F (1:100-500), IF (1:100-500), ELISA (1:5000-10000)

Reactivity: Human

Predicted MW: 78 kDa

Entrez Gene: 4318

Swiss Prot: P14780

Source: KLH conjugated synthetic peptide derived from human MMP9: 151-250/707.

Purification: affinity purified by Protein A

Storage: 0.01M TBS (pH7.4) with 1% BSA, 0.02% Proclin300 and 50% Glycerol.

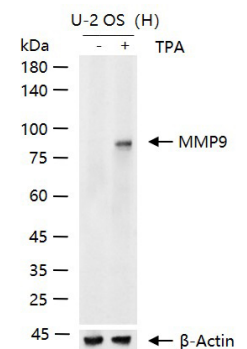
Shipped at 4°C. Store at -20°C for one year. Avoid repeated freeze/thaw cycles.

Background: bs-7059P is one synthetic peptide derived from human MMP-9.

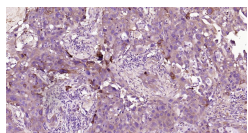
Proteins of the matrix metalloproteinase (MMP) family are involved in the breakdown of extracellular matrix in normal physiological processes, such as embryonic development, reproduction, and tissue remodeling, as well as in disease processes, such as arthritis and metastasis. Most MMP's are secreted as inactive proproteins which are activated when cleaved by extracellular proteinases. The enzyme encoded by this gene degrades type IV and V collagens. Studies in rhesus monkeys suggest that the enzyme is involved in IL-8-induced mobilization of hematopoietic progenitor cells from bone marrow, and murine studies suggest a role in tumor-associated tissue remodeling. [provided by RefSeq, Jul 2008].

## VALIDATION IMAGES

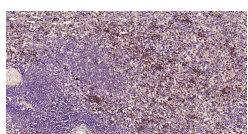
---



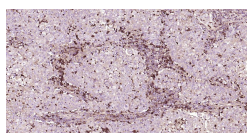
25 ug total protein per lane of various lysates (see on figure) probed with MMP9 polyclonal antibody, unconjugated (bs-4593R) at 1:1000 dilution and 4°C overnight incubation. Followed by conjugated secondary antibody incubation at r.t. for 60 min.



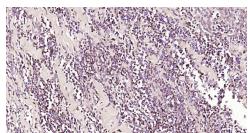
Paraformaldehyde-fixed, paraffin embedded Human Lung Cancer; Antigen retrieval by boiling in sodium citrate buffer (pH6.0) for 15 min; Antibody incubation with MMP9 Polyclonal Antibody, Unconjugated (bs-4593R) at 1:200 overnight at 4°C, followed by conjugation to the bs-0295G-HRP and DAB (C-0010) staining.



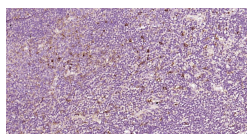
Paraformaldehyde-fixed, paraffin embedded Human Spleen; Antigen retrieval by boiling in sodium citrate buffer (pH6.0) for 15 min; Antibody incubation with MMP9 Polyclonal Antibody, Unconjugated (bs-4593R) at 1:200 overnight at 4°C, followed by conjugation to the bs-0295G-HRP and DAB (C-0010) staining.



Paraformaldehyde-fixed, paraffin embedded Human Gastric Cancer; Antigen retrieval by boiling in sodium citrate buffer (pH6.0) for 15 min; Antibody incubation with MMP9 Polyclonal Antibody, Unconjugated (bs-4593R) at 1:200 overnight at 4°C, followed by conjugation to the bs-0295G-HRP and DAB (C-0010) staining.



Paraformaldehyde-fixed, paraffin embedded Human Colon Cancer; Antigen retrieval by boiling in sodium citrate buffer (pH6.0) for 15 min; Antibody incubation with MMP9 Polyclonal Antibody, Unconjugated (bs-4593R) at 1:200 overnight at 4°C, followed by conjugation to the bs-0295G-HRP and DAB (C-0010) staining.



Paraformaldehyde-fixed, paraffin embedded Human Tonsil; Antigen retrieval by boiling in sodium citrate buffer (pH6.0) for 15 min; Antibody incubation with MMP9 Polyclonal Antibody, Unconjugated (bs-4593R) at 1:200 overnight at 4°C, followed by conjugation to the bs-0295G-HRP and DAB (C-0010) staining.

## PRODUCT SPECIFIC PUBLICATIONS

[IF=17.521] Huan Lei. et al. A Combination Therapy Using Electrical Stimulation and Adaptive, Conductive Hydrogels Loaded with Self-Assembled Nanogels Incorporating Short Interfering RNA Promotes the Repair of Diabetic Chronic Wounds. *Advanced Science*. 2022 Sep;;2201425 IF ; Rat . 36064844

[IF=17.4] Hui Yan. et al. Elaboration a ROS-responsive darutigenol prodrug nanoassemblies for inflammatory arthritis treatment. *NANO TODAY*. 2024 Apr;55:102220 WB ; Mouse . 10.1016/j.nantod.2024.102220

- [IF=14.3] Huan Lei. et al. Nanocomposite Hydrogel for Real-Time Wound Status Monitoring and Comprehensive Treatment. ADV SCI. 2024 Sep;;2405924 IF ; Rat . 39269428
- [IF=6.107] Bei Zhang. et al. CRISPR activation screening in a mouse model for drivers of hepatocellular carcinoma growth and metastasis. ISCIENCE. 2023 Mar;26:106099 IHC ; Mouse . 36843840
- [IF=5.572] Ozge Goktepe. et al. The effect of different doses of nonylphenol on the blood-testicular barrier integrity, hormone level, and DNA damage in the testes of rats. FOOD CHEM TOXICOL. 2023 Jul;177:113816 IHC ; Rat . 37164249