

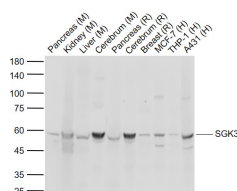
bs-24872R**[Primary Antibody]****SGK3 Rabbit pAb****BioSS**
ANTIBODIES

www.bioss.com.cn

sales@bioss.com.cn

techsupport@bioss.com.cn

400-901-9800

— DATASHEET —**Host:** Rabbit**Isotype:** IgG**Applications:** WB (1:500-2000)**Clonality:** Polyclonal**Reactivity:** Human, Mouse, Rat**Target:** SGK3**Immunogen:** KLH conjugated synthetic peptide derived from mouse SGK3: 71-170/496.**Purification:** affinity purified by Protein A**Predicted MW.:** 57 kDa**Concentration:** 1mg/ml**Subcellular Location:** Cytoplasm**Storage:** 0.01M TBS (pH7.4) with 1% BSA, 0.02% Proclin300 and 50% Glycerol.
Shipped at 4°C. Store at -20°C for one year. Avoid repeated freeze/thaw cycles.**Background:** Serine/threonine-protein kinase Sgk3 (SGK3), also designated serum/glucocorticoid regulated kinase 3, belongs to the Ser/Thr protein kinase family of proteins. The serum- and glucocorticoid-regulated kinase proteins are closely related to the Akt protein family. SGK1, a homolog of SGK3, activates ion channels, in particular potassium (K⁺) channels. SGK2 and SGK3 have been found to also be involved in this activation process, making all three of these proteins important regulators for cell proliferation, epithelial transport and neuromuscular excitability. SGK3 acts as a mediator of IL-3 dependent survival signals in the cell. It localizes to the early endosome and in vesicle-like structures. SGK3 is a widely expressed protein, but it is primarily detected in kidney, liver, pancreas, brain and heart. Phosphorylation of SGK3 at residue Ser 486 leads to an increase in SGK3 activation.**— VALIDATION IMAGES —**

Sample: Lane 1: Mouse Pancreas tissue lysates

Lane 2: Mouse Kidney tissue lysates Lane 3:

Mouse Liver tissue lysates Lane 4: Mouse

Cerebrum tissue lysates Lane 5: Rat Pancreas

tissue lysates Lane 6: Rat Cerebrum tissue

lysates Lane 7: Rat Breast tissue lysates Lane 8:

Human MCF-7 cell lysates Lane 9: Human THP-1

cell lysates Lane 10: Human A431 cell lysates

Primary: Anti-SGK3 (bs-24872R) at 1/1000

dilution Secondary: IRDye800CW Goat Anti-

Rabbit IgG at 1/20000 dilution Predicted band

size: 57 kD Observed band size: 57 kD