

bs-23027R**[Primary Antibody]****ACE2 Rabbit pAb****BioSS**
ANTIBODIES

www.bioss.com.cn

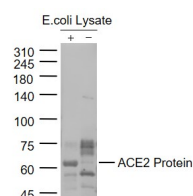
sales@bioss.com.cn

techsupport@bioss.com.cn

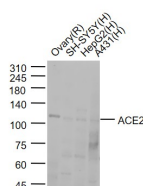
400-901-9800

— DATASHEET —

Host: Rabbit	Isotype: IgG	Applications: WB (1:500-2000)
Clonality: Polyclonal		Reactivity: Human, Escherichia Coli (predicted: Mouse, Rat)
GeneID: 59272	SWISS: Q9BYF1	
Target: ACE2		Predicted MW.: 87 kDa
Immunogen: KLH conjugated synthetic peptide derived from human ACE2: 251-350/805. < Extracellular >		Subcellular Location: Cytoplasm ,Cell projection Location: ,Membrane ,Secreted ,Cell membrane
Purification: affinity purified by Protein A		
Concentration: 1mg/ml		
Storage: 0.01M TBS (pH7.4) with 1% BSA, 0.02% Proclin300 and 50% Glycerol. Shipped at 4°C. Store at -20°C for one year. Avoid repeated freeze/thaw cycles.		
Background: The protein encoded by this gene belongs to the angiotensin-converting enzyme family of dipeptidyl carboxypeptidases and has considerable homology to human angiotensin 1 converting enzyme. This secreted protein catalyzes the cleavage of angiotensin I into angiotensin 1-9, and angiotensin II into the vasodilator angiotensin 1-7. The organ- and cell-specific expression of this gene suggests that it may play a role in the regulation of cardiovascular and renal function, as well as fertility. In addition, the encoded protein is a functional receptor for the spike glycoprotein of the human coronaviruses SARS and HCoV-NL63. [provided by RefSeq, Jul 2008]		

— VALIDATION IMAGES —

Sample: Lane 1: ACE2 Protein Overexpression E.coli Lysate(41410P) at 2ug Lane 2: Control group E.coli Lysate(41410P) Primary: Anti-ACE2 (bs-23027R) at 1/1000 dilution Secondary: IRDye800CW Goat Anti-Rabbit IgG at 1/20000 dilution Predicted band size: 70 kD Observed band size: 70 kD



Sample: Lane 1: Ovary (Rat) Lysate at 40 ug Lane 2: SH-SY5Y (Human) Cell Lysate at 30 ug Lane 3: HepG2 (Human) Cell Lysate at 30 ug Lane 4: A431 (Human) Cell Lysate at 30 ug Primary: Anti-ACE2 (bs-23027R) at 1/1000 dilution Secondary: IRDye800CW Goat Anti-Rabbit IgG at 1/20000 dilution Predicted band size: 120 kD Observed band size: 120 kD