

**bs-14348R****[ Primary Antibody ]****DMRTA2 Rabbit pAb****BioSS**  
**ANTIBODIES**

www.bioss.com.cn

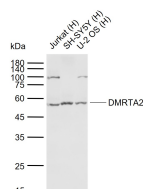
sales@bioss.com.cn

techsupport@bioss.com.cn

400-901-9800

**— DATASHEET —**

<p><b>Host:</b> Rabbit</p> <p><b>Clonality:</b> Polyclonal</p> <p><b>GeneID:</b> 63950</p> <p><b>Target:</b> DMRTA2</p> <p><b>Immunogen:</b> KLH conjugated synthetic peptide derived from human DMRTA2: 21-120/542.</p> <p><b>Purification:</b> affinity purified by Protein A</p> <p><b>Concentration:</b> 1mg/ml</p> <p><b>Storage:</b> 0.01M TBS (pH7.4) with 1% BSA, 0.02% Proclin300 and 50% Glycerol. Shipped at 4°C. Store at -20°C for one year. Avoid repeated freeze/thaw cycles.</p> <p><b>Background:</b> DMRTA2 is a 542 amino acid protein that localizes to the nucleus and contains one DM DNA-binding domain. Expressed testis, DMRTA2 is thought to be involved in sexual developmental processes during maturation. The gene encoding DMRTA2 maps to human chromosome 1, which spans 260 million base pairs, contains over 3,000 genes and comprises nearly 8% of the human genome. Chromosome 1 houses a large number of disease-associated genes, including those that are involved in familial adenomatous polyposis, Stickler syndrome, Parkinson's disease, Gaucher disease, schizophrenia and Usher syndrome. Aberrations in chromosome 1 are found in a variety of cancers, including head and neck cancer, malignant melanoma and multiple myeloma.</p>	<p><b>Applications:</b> WB (1:500-2000)</p> <p><b>Reactivity:</b> Human (predicted: Mouse, Rat, Pig, Cow, Dog)</p> <p><b>Predicted MW.:</b> 53 kDa</p> <p><b>Subcellular Location:</b> Nucleus</p>
---	--

**— VALIDATION IMAGES —**

Sample: Lane 1: Human Jurkat cell lysates Lane 2: Human SH-SY5Y cell lysates Lane 3: Human U-2 OS cell lysates Primary: Anti-DMRTA2 (bs-14348R) at 1/1000 dilution Secondary: IRDye800CW Goat Anti-Rabbit IgG at 1/20000 dilution Predicted band size: 53 kDa Observed band size: 54 kDa