

**bs-14340R****[ Primary Antibody ]****DLC1 + DLC2 Rabbit pAb****Bioss**  
**ANTIBODIES**

www.bioss.com.cn

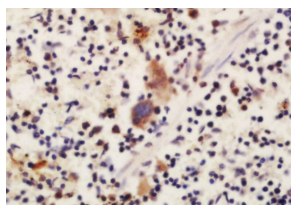
sales@bioss.com.cn

techsupport@bioss.com.cn

400-901-9800

**— DATASHEET —**

<b>Host:</b> Rabbit	<b>Isotype:</b> IgG	<b>Applications:</b> <b>IHC-P</b> (1:100-500)
<b>Clonality:</b> Polyclonal		<b>IHC-F</b> (1:100-500)
<b>GeneID:</b> 10395	<b>SWISS:</b> Q96QB1	<b>IF</b> (1:100-500)
<b>Target:</b> DLC1 + DLC2		<b>Reactivity:</b> Rat (predicted: Human, Mouse, Rabbit, Sheep)
<b>Immunogen:</b> KLH conjugated synthetic peptide derived from human Rho GTPase-activating protein 7: 1201-1300/1528.		
<b>Purification:</b> affinity purified by Protein A		<b>Predicted MW.:</b> 171/122 kDa
<b>Concentration:</b> 1mg/ml		<b>Subcellular Location:</b> Cell membrane
<b>Storage:</b> 0.01M TBS (pH7.4) with 1% BSA, 0.02% Proclin300 and 50% Glycerol. Shipped at 4°C. Store at -20°C for one year. Avoid repeated freeze/thaw cycles.		
<b>Background:</b> This gene encodes a GTPase-activating protein (GAP) that is a member of the rhoGAP family of proteins which play a role in the regulation of small GTP-binding proteins. GAP family proteins participate in signaling pathways that regulate cell processes involved in cytoskeletal changes. This gene functions as a tumor suppressor gene in a number of common cancers, including prostate, lung, colorectal, and breast cancers. Multiple transcript variants due to alternative promoters and alternative splicing have been found for this gene.[provided by RefSeq, Apr 2010].		

**— VALIDATION IMAGES —**

Tissue/cell: rat spleen tissue; 4% Paraformaldehyde-fixed and paraffin-embedded; Antigen retrieval: citrate buffer (0.01M, pH 6.0), Boiling bathing for 15min; Block endogenous peroxidase by 3% Hydrogen peroxide for 30min; Blocking buffer (normal goat serum, C-0005) at 37°C for 20 min; Incubation: Anti-DLC1 Polyclonal Antibody, Unconjugated(bs-14340R) 1:200, overnight at 4°C, followed by conjugation to the secondary antibody(SP-0023) and DAB(C-0010) staining