

MCG10 Rabbit pAb

Catalog Number: bs-7616R

Target Protein: MCG10

Concentration: 1mg/ml

Form: Liquid

Host: Rabbit

Clonality: Polyclonal

Isotype: IgG

Applications: WB (1:500-2000)

Reactivity: Mouse, Rat (predicted:Human, Rabbit, Pig, Sheep, Cow, Chicken, Dog, Horse)

Predicted MW: 41 kDa

Entrez Gene: 57060

Swiss Prot: P57723

Source: KLH conjugated synthetic peptide derived from human MCG10: 1-100/403.

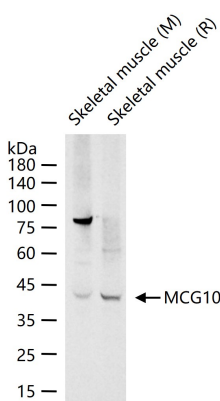
Purification: affinity purified by Protein A

Storage: 0.01M TBS (pH7.4) with 1% BSA, 0.02% Proclin300 and 50% Glycerol.

Shipped at 4°C. Store at -20°C for one year. Avoid repeated freeze/thaw cycles.

Background: MCG10 is a member of the KH-domain RNA-binding protein family. Proteins of this family bind to RNA with specificity for C-rich pyrimidine regions. MCG10 is induced by p53 and DNA damage via two p53-responsive promoter elements.

VALIDATION IMAGES



25 ug total protein per lane of various lysates (see on figure) probed with MCG10 polyclonal antibody, unconjugated (bs-7616R) at 1:1000 dilution and 4°C overnight incubation. Followed by conjugated secondary antibody incubation at r.t. for 60 min.