

bs-9888R**[Primary Antibody]****Bioss**
ANTIBODIES

www.bioss.com.cn

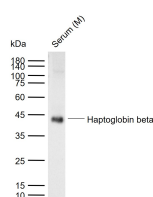
sales@bioss.com.cn

techsupport@bioss.com.cn

400-901-9800

Haptoglobin beta Rabbit pAb**— DATASHEET —**

Host: Rabbit Clonality: Polyclonal GeneID: 3240 Target: Haptoglobin beta Immunogen: KLH conjugated synthetic peptide derived from human Haptoglobulin beta: 311-406/406. Purification: affinity purified by Protein A Concentration: 1mg/ml Storage: 0.01M TBS (pH7.4) with 1% BSA, 0.02% Proclin300 and 50% Glycerol. Shipped at 4°C. Store at -20°C for one year. Avoid repeated freeze/thaw cycles. Background: This gene encodes a preproprotein, which is processed to yield both alpha and beta chains, which subsequently combine as a tetramer to produce haptoglobin. Haptoglobin functions to bind free plasma hemoglobin, which allows degradative enzymes to gain access to the hemoglobin, while at the same time preventing loss of iron through the kidneys and protecting the kidneys from damage by hemoglobin. Mutations in this gene and/or its regulatory regions cause ahaptoglobinemia or hypohaptoglobinemia. This gene has also been linked to diabetic nephropathy, the incidence of coronary artery disease in type 1 diabetes, Crohn's disease, inflammatory disease behavior, primary sclerosing cholangitis, susceptibility to idiopathic Parkinson's disease, and a reduced incidence of Plasmodium falciparum malaria. A similar duplicated gene is located next to this gene on chromosome 16. Multiple transcript variants encoding different isoforms have been found for this gene. [provided by RefSeq, Jul 2008]	Isotype: IgG SWISS: P00738 Applications: WB (1:500-2000) Reactivity: Mouse (predicted: Human, Rat, Cow, Dog, Horse) Predicted MW.: 27/43 kDa Subcellular Location: Secreted
---	--

— VALIDATION IMAGES —

Sample: Lane 1: Mouse Serum Primary: Anti-Haptoglobin beta (bs-9888R) at 1/1000 dilution
Secondary: IRDye800CW Goat Anti-Rabbit IgG at 1/20000 dilution Predicted band size: 27/43 kDa
Observed band size: 43 kDa

— SELECTED CITATIONS —

- **[IF=0]** Román E et al. Effect of a Multistrain Probiotic on Cognitive Function and Risk of Falls in Patients With Cirrhosis: A Randomized Trial. Hepatol Commun. 2019 Mar 12;3(5):632-645. ELISA ;Human. 31061952