

**bs-4808R****[ Primary Antibody ]****BioSS**  
**ANTIBODIES**

www.bioss.com.cn

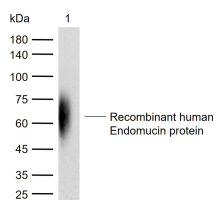
sales@bioss.com.cn

techsupport@bioss.com.cn

400-901-9800

**Endomucin Rabbit pAb****— DATASHEET —**

<b>Host:</b> Rabbit	<b>Isotype:</b> IgG	<b>Applications:</b> WB (1:500-2000)
<b>Clonality:</b> Polyclonal		<b>Reactivity:</b> Human
<b>GeneID:</b> 51705	<b>SWISS:</b> Q9ULC0	
<b>Target:</b> Endomucin		
<b>Immunogen:</b> KLH conjugated synthetic peptide derived from human Endomucin: 21-120/261. < Extracellular >		<b>Predicted MW.:</b> 25 kDa
<b>Purification:</b> affinity purified by Protein A		<b>Subcellular Location:</b> Secreted ,Cell membrane
<b>Concentration:</b> 1mg/ml		
<b>Storage:</b> 0.01M TBS (pH7.4) with 1% BSA, 0.02% Proclin300 and 50% Glycerol. Shipped at 4°C. Store at -20°C for one year. Avoid repeated freeze/thaw cycles.		
<b>Background:</b> Endothelial sialomucin, also called endomucin or mucin-like sialoglycoprotein, which interferes with the assembly of focal adhesion complexes and inhibits interaction between cells and the extracellular matrix.		

**— VALIDATION IMAGES —**

Sample: Lane 1: Recombinant human Endomucin protein(bs-43605P) Primary: Anti-Endomucin (bs-4808R) at 1/1000 dilution  
Secondary: IRDye800CW Goat Anti-Rabbit IgG at 1/20000 dilution Predicted band size: 25 kDa  
Observed band size: 65 kDa

**— SELECTED CITATIONS —**

- **[IF=13.3]** Yadong Guo. et al. PDLSCs-ApoEVs enhance bone regeneration through MAPK1/3-induced STC1 upregulation in endothelial cells via the FOS pathway. CHEM ENG J. 2025 Apr;:162927 IF,WB ;Human,Mouse. 10.1016/j.cej.2025.162927
- **[IF=3.5]** Haiqi Zhang. et al. Silencing of LOX-1 attenuates high glucose-induced ferroptosis in THVECs via the HIF-1 $\alpha$ /SLC7A11 signaling pathway. EXP CELL RES. 2025 Feb;:114451 WB ;Rat. 40015503