
FBXL17 Rabbit pAb

Catalog Number: bs-8469R

Target Protein: FBXL17

Concentration: 1mg/ml

Form: Liquid

Host: Rabbit

Clonality: Polyclonal

Isotype: IgG

Applications: WB (1:500-2000)

Reactivity: Human (predicted: Mouse, Rat, Rabbit, Pig, Sheep, Cow, Chicken, Dog, Horse)

Predicted MW: 76 kDa

Subcellular: Nucleus

Locations:

Entrez Gene: 64839

Swiss Prot: Q9UF56

Source: KLH conjugated synthetic peptide derived from human FBXL17: 451-550/701.

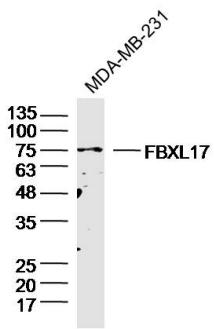
Purification: affinity purified by Protein A

Storage: 0.01M TBS (pH7.4) with 1% BSA, 0.02% Proclin300 and 50% Glycerol.

Shipped at 4°C. Store at -20°C for one year. Avoid repeated freeze/thaw cycles.

Background: Members of the F-box protein family, such as FBXL17, are characterized by an approximately 40-amino acid F-box motif. SCF complexes, formed by SKP1 (MIM 601434), cullin (see CUL1; MIM 603134), and F-box proteins, act as protein-ubiquitin ligases. F-box proteins interact with SKP1 through the F box, and they interact with ubiquitination targets through other protein interaction domains (Jin et al., 2004 [PubMed 15520277]). [supplied by OMIM, Mar 2008]

VALIDATION IMAGES



Sample: MDA-MB-231 cell (Human) Lysate at 30 ug Primary: Anti-FBXL17 (bs-8469R) at 1/300 dilution
Secondary: IRDye800CW Goat Anti-Rabbit IgG at 1/20000 dilution Predicted band size: 76kD Observed band size: 76kD