

phospho-Dishevelled 2 (Thr224) Rabbit pAb

Catalog Number: bs-9060R

Target Protein: phospho-Dishevelled 2 (Thr224)

Concentration: 1mg/ml

Form: Liquid

Host: Rabbit

Clonality: Polyclonal

Isotype: IgG

Applications: IHC-P (1:100-500), IHC-F (1:100-500), IF (1:50-200)

Reactivity: Human (predicted: Mouse, Rat, Pig, Sheep, Cow, Chicken, Dog, Horse)

Predicted MW: 79 kDa

Entrez Gene: 1856

Swiss Prot: O14641

Source: KLH conjugated synthesised phosphopeptide derived from human DVL2 around the phosphorylation site of Thr224: SS(p-T)EQ.

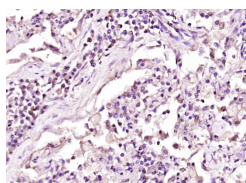
Purification: affinity purified by Protein A

Storage: 0.01M TBS (pH7.4) with 1% BSA, 0.02% Proclin300 and 50% Glycerol.

Shipped at 4°C. Store at -20°C for one year. Avoid repeated freeze/thaw cycles.

Background: This gene encodes a member of the dishevelled (dsh) protein family. The vertebrate dsh proteins have approximately 40% amino acid sequence similarity with Drosophila dsh. This gene encodes a 90-kD protein that undergoes posttranslational phosphorylation to form a 95-kD cytoplasmic protein, which may play a role in the signal transduction pathway mediated by multiple Wnt proteins. The mechanisms of dishevelled function in Wnt signaling are likely to be conserved among metazoans. [provided by RefSeq, Jul 2008].

VALIDATION IMAGES



Paraformaldehyde-fixed, paraffin embedded (human lung carcinoma); Antigen retrieval by boiling in sodium citrate buffer (pH6.0) for 15min; Block endogenous peroxidase by 3% hydrogen peroxide for 20 minutes; Blocking buffer (normal goat serum) at 37°C for 30min; Antibody incubation with (phospho-Dishevelled 2 (Thr224)) Polyclonal Antibody, Unconjugated (bs-9060R) at 1:400 overnight at 4°C, followed by operating according to SP Kit(Rabbit) (sp-0023) instructions and DAB staining.