

bs-9505R**[Primary Antibody]****BioSS**
ANTIBODIES

www.bioss.com.cn

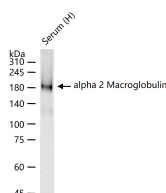
sales@bioss.com.cn

techsupport@bioss.com.cn

400-901-9800

alpha 2 Macroglobulin Rabbit pAb**— DATASHEET —**

Host: Rabbit	Isotype: IgG	Applications: WB (1:500-2000)
Clonality: Polyclonal		Reactivity: Human (predicted: Mouse, Rat, Rabbit, Pig, Cow, Chicken, Horse)
GeneID: 2	SWISS: P01023	Predicted MW.: 160 kDa
Target: alpha 2 Macroglobulin		Subcellular Location: Secreted ,Cytoplasm
Immunogen: KLH conjugated synthetic peptide derived from human alpha 2 Macroglobulin: 751-850/1474.		
Purification: affinity purified by Protein A		
Concentration: 1mg/ml		
Storage: 0.01M TBS (pH7.4) with 1% BSA, 0.02% Proclin300 and 50% Glycerol. Shipped at 4°C. Store at -20°C for one year. Avoid repeated freeze/thaw cycles.		
Background: Alpha-2-macroglobulin is a protease inhibitor and cytokine transporter. It inhibits many proteases, including trypsin, thrombin and collagenase. A2M is implicated in Alzheimer disease (AD) due to its ability to mediate the clearance and degradation of A-beta, the major component of beta-amyloid deposits. [provided by RefSeq, Jul 2008].		

— VALIDATION IMAGES —

25 ug total protein per lane of various lysates
(see on figure) probed with alpha 2
Macroglobulin polyclonal antibody,
unconjugated (bs-9505R) at 1:1000 dilution and
4°C overnight incubation. Followed by
conjugated secondary antibody incubation at r.t.
for 60 min.

— SELECTED CITATIONS —

- **[IF=3.7]** Liu, Ranran, et al. "Uncovering the embryonic development-related proteome and metabolome signatures in breast muscle and intramuscular fat of fast-and slow-growing chickens." BMC Genomics 18.1 (2017): 816. WB ;Chicken. 29061108
- **[IF=1.56]** Hu, Hai Xia, et al. "Anti-inflammatory effects of Gualou Guizhi decoction in transient focal cerebral ischemic brains. Corrigendum in/mmr/12/3/3998." Molecular medicine reports 12.1 (2015): 1321-1327. IHC ;Rat. 26044371
- **[IF=1.243]** Shu et al. Differentially expressed serum proteins associated with calcium regulation and hypocalcemia in dairy cows. (2017) Asian-Australas.J.Anim.Sc. 30:893-901 WB ;Bovine. 27809461