

**bs-9915R****[ Primary Antibody ]****BioSS**  
**ANTIBODIES**

www.bioss.com.cn

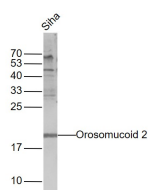
sales@bioss.com.cn

techsupport@bioss.com.cn

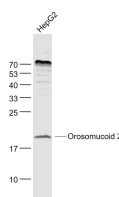
400-901-9800

**Alpha 1 acid glycoprotein 2 Rabbit pAb****— DATASHEET —**

<b>Host:</b> Rabbit	<b>Isotype:</b> IgG	<b>Applications:</b> WB (1:500-2000)
<b>Clonality:</b> Polyclonal		<b>Reactivity:</b> Human
<b>GeneID:</b> 5005	<b>SWISS:</b> P19652	
<b>Target:</b> Alpha 1 acid glycoprotein 2		
<b>Immunogen:</b> KLH conjugated synthetic peptide derived from human Orosomucoid 2: 101-201/201.		<b>Predicted MW.:</b> 22 kDa
<b>Purification:</b> affinity purified by Protein A		<b>Subcellular Location:</b> Secreted
<b>Concentration:</b> 1mg/ml		
<b>Storage:</b> 0.01M TBS (pH7.4) with 1% BSA, 0.02% Proclin300 and 50% Glycerol. Shipped at 4°C. Store at -20°C for one year. Avoid repeated freeze/thaw cycles.		
<b>Background:</b> Orosomucoid 2 is a key acute phase plasma protein. Because of its increase due to acute inflammation, this protein is classified as an acute-phase reactant. The specific function of this protein has not yet been determined; however Orosomucoid 2 appears to function in modulating the activity of the immune system during the acute-phase reaction.		

**— VALIDATION IMAGES —**

Sample: SiHa(Human) Cell Lysate at 30 ug  
 Primary: Anti-Orosomucoid 2 (bs-9915R) at 1/1000 dilution  
 Secondary: IRDye800CW Goat Anti-Rabbit IgG at 1/20000 dilution  
 Predicted band size: 22 kD Observed band size: 22 kD



Sample: HepG2(Human) Cell Lysate at 30 ug  
 Primary: Anti-Orosomucoid 2 (bs-9915R) at 1/1000 dilution  
 Secondary: IRDye800CW Goat Anti-Rabbit IgG at 1/20000 dilution  
 Predicted band size: 22 kD Observed band size: 22 kD