

**bs-20664R****[ Primary Antibody ]****phospho-Fos B (Ser27) Rabbit pAb****BioSS**  
ANTIBODIES

www.bioss.com.cn

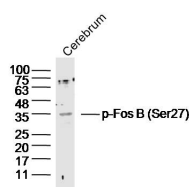
sales@bioss.com.cn

techsupport@bioss.com.cn

400-901-9800

**— DATASHEET —**

<b>Host:</b> Rabbit	<b>Isotype:</b> IgG	<b>Applications:</b> WB (1:500-2000)
<b>Clonality:</b> Polyclonal		<b>Reactivity:</b> Mouse (predicted: Human, Rat, Sheep, Cow, Dog, GuineaPig, Horse)
<b>GeneID:</b> 2354	<b>SWISS:</b> P53539	<b>Predicted MW.:</b> 36 kDa
<b>Target:</b> Fos B (Ser27)		<b>Subcellular Location:</b> Nucleus
<b>Immunogen:</b> KLH conjugated synthesised phosphopeptide derived from human Fos B around the phosphorylation site of Ser27: QYL(p-S)SV.		
<b>Purification:</b> affinity purified by Protein A		
<b>Concentration:</b> 1mg/ml		
<b>Storage:</b> 0.01M TBS (pH7.4) with 1% BSA, 0.02% Proclin300 and 50% Glycerol. Shipped at 4°C. Store at -20°C for one year. Avoid repeated freeze/thaw cycles.		
<b>Background:</b> Cellular oncogenes, or proto-oncogenes, play pivotal roles in cellular communication pathways that regulate normal growth, development and differentiation. The cellular oncogene families fos and jun encode nuclear proteins that can function as transcription factors. The fos family of nuclear oncogenes encode cFos, Fos B, (fos-related antigen) Fra 1, and Fra 2. Also named as DKFZp686C0818; FBJ murine osteosarcoma viral oncogene homolog B; FosB; G0/G1 switch regulatory protein 3; G0S3; GOS3; GOSB; MGC42291; Oncogene FOS B; Protein fosB.		

**— VALIDATION IMAGES —**

Sample: Cerebrum (Mouse) Lysate at 40 ug  
Primary: Anti-phospho-Fos B (Ser27)(bs-20664R) at 1/300 dilution  
Secondary: IRDye800CW Goat Anti-Rabbit IgG at 1/20000 dilution  
Predicted band size: 36kD  
Observed band size: 36kD