

bs-20642R**[Primary Antibody]****GPR30 Rabbit pAb****BioSS**
ANTIBODIES

www.bioss.com.cn

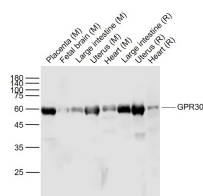
sales@bioss.com.cn

techsupport@bioss.com.cn

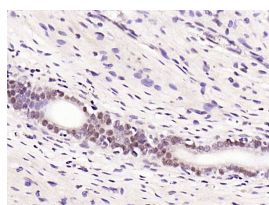
400-901-9800

DATASHEET**Host:** Rabbit**Isotype:** IgG**Clonality:** Polyclonal**GeneID:** 2852**SWISS:** Q99527**Target:** GPR30**Immunogen:** KLH conjugated synthetic peptide derived from human GPR30: 21-120/375.**Purification:** affinity purified by Protein A**Concentration:** 1mg/ml**Storage:** 0.01M TBS (pH7.4) with 1% BSA, 0.02% Proclin300 and 50% Glycerol.

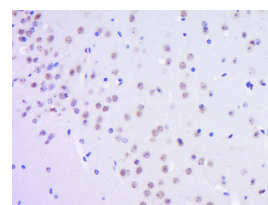
Shipped at 4°C. Store at -20°C for one year. Avoid repeated freeze/thaw cycles.

Background: This gene is a member of the G-protein coupled receptor 1 family and encodes a multi-pass membrane protein that localizes to the endoplasmic reticulum. The protein binds estrogen, resulting in intracellular calcium mobilization and synthesis of phosphatidylinositol 3,4,5-trisphosphate in the nucleus. This protein therefore plays a role in the rapid nongenomic signaling events widely observed following stimulation of cells and tissues with estrogen. Alternate transcriptional splice variants which encode the same protein have been characterized. [provided by RefSeq, Jul 2008]**Applications:** WB (1:500-2000)**IHC-P** (1:100-500)**IHC-F** (1:100-500)**IF** (1:100-500)**Flow-Cyt** (1µg/Test)**Reactivity:** Human, Mouse, Rat**Predicted MW.:** 42 kDa**Subcellular Location:** Cell membrane**VALIDATION IMAGES**

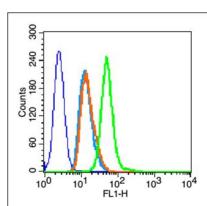
Sample: Lane 1: Placenta (Mouse) Lysate at 40 ug
 Lane 2: Fetal brain (Mouse) Lysate at 40 ug
 Lane 3: Large intestine (Mouse) Lysate at 40 ug
 Lane 4: Uterus (Mouse) Lysate at 40 ug
 Lane 5: Heart (Mouse) Lysate at 40 ug
 Lane 6: Large intestine (Rat) Lysate at 40 ug
 Lane 7: Uterus (Rat) Lysate at 40 ug
 Lane 8: Heart (Rat) Lysate at 40 ug
 Primary: Anti-GPR30 (bs-20642R) at 1/1000 dilution
 Secondary: IRDye800CW Goat Anti-Rabbit IgG at 1/20000 dilution
 Predicted band size: 55 kD
 Observed band size: 58 kD



Paraformaldehyde-fixed, paraffin embedded (rat uterus); Antigen retrieval by boiling in sodium citrate buffer (pH6.0) for 15min; Block endogenous peroxidase by 3% hydrogen peroxide for 20 minutes; Blocking buffer (normal goat serum) at 37°C for 30min; Antibody incubation with (GPR30) Polyclonal Antibody, Unconjugated (bs-20642R) at 1:200 overnight at 4°C, followed by operating according to SP Kit(Rabbit) (sp-0023) instructions and DAB staining.



Paraformaldehyde-fixed, paraffin embedded (Mouse brain); Antigen retrieval by boiling in sodium citrate buffer (pH6.0) for 15min; Block endogenous peroxidase by 3% hydrogen peroxide for 20 minutes; Blocking buffer (normal goat serum) at 37°C for 30min; Antibody incubation with (GPR30) Polyclonal Antibody, Unconjugated (bs-20642R) at 1:400 overnight at 4°C, followed by operating according to SP Kit(Rabbit) (sp-0023) instructions and DAB staining.



Blank control (blue line): A431 cells (fixed with 70% methanol (Overnight at 4°C) and then permeabilized with 90% ice-cold methanol for 20 min at -20°C). Primary Antibody (green line):

Important Note: This product as supplied is intended for research use only, not for use in human, therapeutic or diagnostic applications.

Rabbit Anti-PR30 antibody (bs-20642R), Dilution:
1µg /10⁶ cells; Isotype Control Antibody
(orange line): Rabbit IgG . Secondary Antibody
(white blue line): Goat anti-rabbit IgG-
FITC, Dilution: 1µg /test.