

**bs-20625R****[ Primary Antibody ]****OPG Rabbit pAb****BioSS**  
**ANTIBODIES**

www.bioss.com.cn

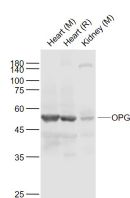
sales@bioss.com.cn

techsupport@bioss.com.cn

400-901-9800

**— DATASHEET —**

<b>Host:</b> Rabbit <b>Clonality:</b> Polyclonal <b>GeneID:</b> 4982 <b>Target:</b> OPG <b>Immunogen:</b> KLH conjugated synthetic peptide derived from human OPG: 101-200/401. <b>Purification:</b> affinity purified by Protein A <b>Concentration:</b> 1mg/ml <b>Storage:</b> 0.01M TBS (pH7.4) with 1% BSA, 0.02% Proclin300 and 50% Glycerol. Shipped at 4°C. Store at -20°C for one year. Avoid repeated freeze/thaw cycles. <b>Background:</b> Osteoprotegerin (OPG, or osteoclastogenesis inhibitory factor) is a secretory glycoprotein belonging to TNF receptor superfamily. Acts as decoy receptor for RANKL and thereby neutralizes its function in osteoclastogenesis. Inhibits the activation of osteoclasts and promotes osteoclast apoptosis. Bone homeostasis seems to depend on the local RANKL/OPG ratio. May also play a role in preventing arterial calcification. May act as decoy receptor for TRAIL and protect against apoptosis. TRAIL binding blocks the inhibition of osteoclastogenesis. OPG acts as a soluble factor in the regulation of bone mass and may be beneficial in the treatment of osteoporosis with increased osteoclast activity. OPG consists of 401 amino acids with a molecular weight of 44 kDa as a monomer and 90 kDa as a disulphide-linked dimer.	<b>Isotype:</b> IgG <b>SWISS:</b> O00300 <b>Applications:</b> WB (1:500-2000)  <b>Reactivity:</b> Mouse, Rat (predicted: Human, Rabbit)  <b>Predicted MW.:</b> 44 kDa  <b>Subcellular Location:</b> Secreted
--	---

**— VALIDATION IMAGES —**

Sample: Lane 1: Heart (Mouse) Lysate at 40 ug  
Lane 2: Heart (Rat) Lysate at 40 ug Lane 3:  
Kidney (Mouse) Lysate at 40 ug Primary: Anti-  
OPG (bs-20625R) at 1/1000 dilution Secondary:  
IRDye800CW Goat Anti-Rabbit IgG at 1/20000  
dilution Predicted band size: 55 kD Observed  
band size: 55 kD