

bs-11828R**[Primary Antibody]****BioSS**
ANTIBODIES

www.bioss.com.cn

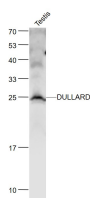
sales@bioss.com.cn

techsupport@bioss.com.cn

400-901-9800

DULLARD Rabbit pAb**— DATASHEET —**

Host: Rabbit	Isotype: IgG	Applications: WB (1:500-2000)
Clonality: Polyclonal		Reactivity: Mouse (predicted: Human, Rat, Cow, Dog, Horse)
GeneID: 23399	SWISS: Q95476	
Target: DULLARD		Predicted MW.: 28 kDa
Immunogen: KLH conjugated synthetic peptide derived from human DULLARD: 121-200/244.		Subcellular Location: Cell membrane ,Cytoplasm ,Nucleus
Purification: affinity purified by Protein A		
Concentration: 1mg/ml		
Storage: 0.01M TBS (pH7.4) with 1% BSA, 0.02% Proclin300 and 50% Glycerol. Shipped at 4°C. Store at -20°C for one year. Avoid repeated freeze/thaw cycles.		
Background: In eukaryotes, the phosphorylation and dephosphorylation of proteins on serine and threonine residues is an essential means of regulating a broad range of cellular functions, including division, homeostasis and apoptosis. A group of proteins that are intimately involved in this process are the protein phosphatases. Dullard, also known as NET56, is a 244 amino acid single-pass membrane protein that localizes to both the nucleus and the endoplasmic reticulum and contains one FCP1 homology domain. Functioning as a serine/threonine phosphatase, Dullard catalyses the dephosphorylation of target proteins and is thought to be required for proper nuclear membrane morphology. Human Dullard shares 92% sequence identity with its zebrafish counterpart, suggesting a conserved role between species.		

— VALIDATION IMAGES —

Sample: Testis (Mouse) Lysate at 40 ug Primary:

Anti- DULLARD (bs-11828R) at 1/1000 dilution

Secondary: IRDye800CW Goat Anti-Rabbit IgG at

1/20000 dilution Predicted band size: 28 kD

Observed band size: 25 kD