

**bs-6377R****[ Primary Antibody ]**

## Deformed Epidermal Autoregulatory Factor 1 Rabbit pAb

**BioSS**  
ANTIBODIES

www.bioss.com.cn

sales@bioss.com.cn

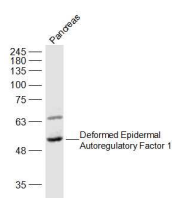
techsupport@bioss.com.cn

400-901-9800

### — DATASHEET —

<b>Host:</b> Rabbit	<b>Isotype:</b> IgG	<b>Applications:</b> WB (1:500-2000)
<b>Clonality:</b> Polyclonal		<b>Reactivity:</b> Mouse (predicted: Rat, Cow, Chicken, Dog, Horse)
<b>GeneID:</b> 10522	<b>SWISS:</b> O75398	
<b>Target:</b> Deformed Epidermal Autoregulatory Factor 1		<b>Predicted MW.:</b> 59 kDa
<b>Immunogen:</b> KLH conjugated synthetic peptide derived from human Deformed Epidermal Autoregulatory Factor 1: 211-310/565.		<b>Subcellular Location:</b> Secreted ,Cytoplasm ,Nucleus
<b>Purification:</b> affinity purified by Protein A		
<b>Concentration:</b> 1mg/ml		
<b>Storage:</b> 0.01M TBS (pH7.4) with 1% BSA, 0.02% Proclin300 and 50% Glycerol. Shipped at 4°C. Store at -20°C for one year. Avoid repeated freeze/thaw cycles.		
<b>Background:</b> Suppressin, also known as DEAF1 is a transcription factor required for embryonic development. Suppressin contains one SAND domain and one C-terminal MYND-type zinc finger. It interacts with LMO4 and CLIM-2, suggesting that it plays a role mediating cell fate and embryonic pattern formation. Suppressin is expressed in a variety of tissues and localizes to the nucleus. Several isoforms exist due to alternative splicing and, depending on the isoform, Suppressin is secreted in some cell types. Secreted Suppressin can function to inhibit cell proliferation, arresting cells in the G0 or G1 phase. Mutations in the gene encoding Suppressin may result in a growth advantage leading to the development and progression of neoplasia. This suggest that Supressin is a potential target for cancer therapy.		

### — VALIDATION IMAGES —



Sample: Pancreas (Mouse) Lysate at 40 ug  
Primary: Anti-Deformed Epidermal Autoregulatory Factor 1 (bs-6377R) at 1/2000 dilution  
Secondary: IRDye800CW Goat Anti-Rabbit IgG at 1/20000 dilution  
Predicted band size: 59 kD  
Observed band size: 59 kD