

bs-9472R**[Primary Antibody]****BioSS**
ANTIBODIES

www.bioss.com.cn

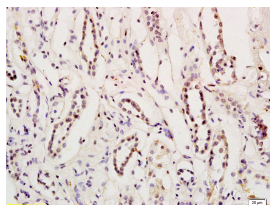
sales@bioss.com.cn

techsupport@bioss.com.cn

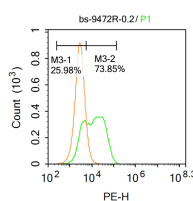
400-901-9800

Myocardin Rabbit pAb**DATASHEET**

Host: Rabbit Clonality: Polyclonal GeneID: 93649 Target: Myocardin Immunogen: KLH conjugated synthetic peptide derived from human Myocardin: 456-560/461-560/938. Purification: affinity purified by Protein A Concentration: 1mg/ml Storage: 0.01M TBS (pH7.4) with 1% BSA, 0.02% Proclin300 and 50% Glycerol. Shipped at 4°C. Store at -20°C for one year. Avoid repeated freeze/thaw cycles. Background: Transcriptional factor that uses the canonical single or multiple CArG boxes DNA sequence. Binds CArG boxes only in the presence of serum response factor (SRF). Acts as a cofactor of SRF and modulates SRF-target genes. Regulates the expression of a set of cardiac and smooth muscle-specific genes. Plays a crucial role in cardiogenesis and differentiation of the smooth muscle cell lineage.	Isotype: IgG SWISS: Q8IZQ8	Applications: IHC-P (1:100-500) IHC-F (1:100-500) IF (1:100-500) Flow-Cyt (1ug/test) Reactivity: Human (predicted: Mouse, Rat, Rabbit, Pig, Cow, Chicken, Dog, Horse) Predicted MW.: 103 kDa Subcellular Location: Nucleus
---	---	--

VALIDATION IMAGES

Tissue/cell: human kidney tissue; 4% Paraformaldehyde-fixed and paraffin-embedded; Antigen retrieval: citrate buffer (0.01M, pH 6.0), Boiling bathing for 15min; Block endogenous peroxidase by 3% Hydrogen peroxide for 30min; Blocking buffer (normal goat serum, C-0005) at 37°C for 20 min; Incubation: Anti-Myocardin Polyclonal Antibody, Unconjugated(bs-9472R) 1:200, overnight at 4°C, followed by conjugation to the secondary antibody(SP-0023) and DAB(C-0010) staining



Blank control: HeLa. Primary Antibody (green line): Rabbit Anti-Myocardin antibody (bs-9472R) Dilution: 1μg /10⁶ cells; Isotype Control Antibody (orange line): Rabbit IgG . Secondary Antibody : Goat anti-rabbit IgG-PE Dilution: 1μg /test. Protocol The cells were fixed with 4% PFA (10min at room temperature)and then permeabilized with 90% ice-cold methanol for 20 min at -20°C. The cells were then incubated in 5%BSA to block non-specific protein-protein interactions for 30 min at at room temperature .Cells stained with Primary Antibody for 30 min at room temperature. The secondary antibody used for 40 min at room temperature. Acquisition of 20,000 events was performed.

SELECTED CITATIONS

- **[IF=17.521]** Hao Sun. et al. Silencing of NOTCH3 Signaling in Meniscus Smooth Muscle Cells Inhibits Fibrosis and Exacerbates Degeneration in a HEYL-Dependent Manner. Advanced Science. 2023 Apr;;2207020 IF ;Human. 37026620
- **[IF=0.8]** Morita et al. Mechanisms underlying a decrease in KCl-induced contraction after long-term serum-free organ culture of rat isolated mesenteric artery. (2014) J.Vet.Med.Sci. 76:963-9 WB ;Rat. 24694942

Important Note: This product as supplied is intended for research use only, not for use in human, therapeutic or diagnostic applications.