

**bs-6314R****[ Primary Antibody ]****NANOS2 Rabbit pAb****BioSS**  
**ANTIBODIES**

www.bioss.com.cn

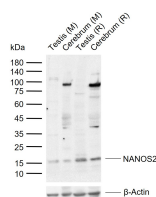
sales@bioss.com.cn

techsupport@bioss.com.cn

400-901-9800

**— DATASHEET —**

<b>Host:</b> Rabbit <b>Clonality:</b> Polyclonal <b>GeneID:</b> 339345 <b>Target:</b> NANOS2 <b>Immunogen:</b> KLH conjugated synthetic peptide derived from human NANOS2: 45-138/138. <b>Purification:</b> affinity purified by Protein A <b>Concentration:</b> 1mg/ml <b>Storage:</b> 0.01M TBS (pH7.4) with 1% BSA, 0.02% Proclin300 and 50% Glycerol. Shipped at 4°C. Store at -20°C for one year. Avoid repeated freeze/thaw cycles. <b>Background:</b> Required to support proliferation and self-renewal of proximal germ cells in males only. Probably regulates translation of specific mRNAs by associating with the 3'-UTR of mRNA targets. Essential for spermatogonia formation.	<b>Isotype:</b> IgG <b>SWISS:</b> P60321	<b>Applications:</b> WB (1:500-2000) <b>Reactivity:</b> Mouse, Rat (predicted: Human)  <b>Predicted MW.:</b> 15 kDa <b>Subcellular Location:</b> Cytoplasm
--	---	---

**— VALIDATION IMAGES —**

Sample: Lane 1: Mouse Testis tissue lysates Lane 2: Mouse Cerebrum tissue lysates Lane 3: Rat Testis tissue lysates Lane 4: Rat Cerebrum tissue lysates  
Primary: Anti-NANOS2 (bs-6314R) at 1/1000 dilution Secondary: IRDye800CW Goat Anti-Rabbit IgG at 1/20000 dilution  
Predicted band size: 15 kDa Observed band size: 16 kDa

**— SELECTED CITATIONS —**

- **[IF=8.079]** Honda Naoto. et al. Roles of microglia/macrophage and antibody in cell sheet transplantation in the central nervous system. STEM CELL RES THER. 2022 Dec;13(1):1-11 IHC ;Mouse. 36089602