

bs-6894R**[Primary Antibody]****HFREP1 Rabbit pAb****Bioss**
ANTIBODIES

www.bioss.com.cn

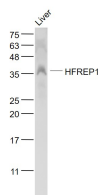
sales@bioss.com.cn

techsupport@bioss.com.cn

400-901-9800

— DATASHEET —

Host: Rabbit	Isotype: IgG	Applications: WB (1:500-2000)
Clonality: Polyclonal		Reactivity: Mouse (predicted: Human, Rat, Sheep, Cow, Horse)
GeneID: 2267	SWISS: Q08830	
Target: HFREP1		Predicted MW.: 32 kDa
Immunogen: KLH conjugated synthetic peptide derived from human HFREP1/FGL1: 251-312/312.		Subcellular Location: Secreted
Purification: affinity purified by Protein A		
Concentration: 1mg/ml		
Storage: 0.01M TBS (pH7.4) with 1% BSA, 0.02% Proclin300 and 50% Glycerol. Shipped at 4°C. Store at -20°C for one year. Avoid repeated freeze/thaw cycles.		
Background: Fibrinogen-like 1 is a member of the fibrinogen family. This protein is homologous to the carboxy terminus of the fibrinogen beta- and gamma- subunits which contains the four conserved cysteines of fibrinogens and fibrinogen related proteins. However, this protein lacks the platelet-binding site, cross-linking region and a thrombin-sensitive site which are necessary for fibrin clot formation. This protein may play a role in the development of hepatocellular carcinomas. Four alternatively spliced transcript variants encoding the same protein exist for this gene. [provided by RefSeq, Jul 2008].		

— VALIDATION IMAGES —

Sample: Liver (Mouse) Lysate at 40 ug Primary:
Anti- HFREP1 (bs-6894R) at 1/1000 dilution
Secondary: IRDye800CW Goat Anti-Rabbit IgG at
1/20000 dilution Predicted band size: 32 kD
Observed band size: 35 kD