

bs-20395R**[Primary Antibody]****Bioss**
ANTIBODIES

www.bioss.com.cn

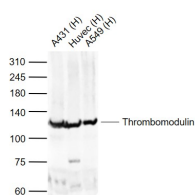
sales@bioss.com.cn

techsupport@bioss.com.cn

400-901-9800

Thrombomodulin Rabbit pAb**— DATASHEET —**

Host: Rabbit Clonality: Polyclonal GeneID: 7056 Target: Thrombomodulin Immunogen: KLH conjugated synthetic peptide derived from human Thrombomodulin: 21-120/575. < Extracellular > Purification: affinity purified by Protein A Concentration: 1mg/ml Storage: Preservative: 0.02% Proclin300, Constituents: 1% BSA, 0.01M PBS, pH7.4. Shipped at 4°C. Store at -20°C for one year. Avoid repeated freeze/thaw cycles. Background: Thrombomodulin, TM is cell surface glycoprotein; plays an important role in the protein C anticoagulant pathway. It located in a vein, artery and capillary endothelial cells on the surface of plasma membrane protein. It is generally believed: TM vascular endothelial injury is an important parameter is the thrombin receptor, known in a variety of normal human tissues, can also be expressed in many tumors, TM may be similar to the E-cadherin, and is a lectin Like activity of a new class of members of the cell adhesion molecules. CD141/Thrombomodulin is an exclusively endothelial cell surface glycoprotein that forms a 1:1 complex with thrombin. Binding of thrombin to this high-affinity receptor alters its specificity toward several substrates. The complex activates protein C approximately 1000 times faster than thrombin alone. Activated protein C degrades clotting factors V and VIII; thus, thrombomodulin converts thrombin into a physiologic anticoagulant. Thrombomodulin is also found in the circulatory and urinary systems, the physiologic significance of this is obscure.	Isotype: IgG SWISS: P07204 Applications: WB (1:500-2000) Reactivity: Human (predicted: Mouse, Sheep, Cow, Dog) Predicted MW.: 61 kDa Subcellular Location: Cell membrane
---	---

— VALIDATION IMAGES —

Sample: Lane 1: A431 (Human) Cell Lysate at 30 ug
 Lane 2: Huvec (Human) Cell Lysate at 30 ug
 Lane 3: A549 (Human) Cell Lysate at 30 ug
 Primary: Anti-Thrombomodulin (bs-20395R) at 1/1000 dilution
 Secondary: IRDye800CW Goat Anti-Rabbit IgG at 1/20000 dilution
 Predicted band size: 61 kD
 Observed band size: 120 kD

— SELECTED CITATIONS —

- **[IF=4.57]** Daisuke Noguchi. et al. The impact of dabigatran treatment on sinusoidal protection against hepatic ischemia - reperfusion injury in mice. 2020 Oct 27 WB ;Mouse. 33108682
- **[IF=1.26]** Zhao et al. Unfractionated heparin protects the protein C system against lipopolysaccharide-induced

Important Note: This product as supplied is intended for research use only, not for use in human, therapeutic or diagnostic applications.

damagein vivoandin vitro. (2017) Exp.Ther.Med. 14:5515-5522 WB ;Human. 29285085