

**bs-19159R****[ Primary Antibody ]****ZFYVE26 Rabbit pAb****Bioss**  
**ANTIBODIES**

www.bioss.com.cn

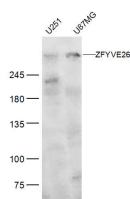
sales@bioss.com.cn

techsupport@bioss.com.cn

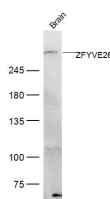
400-901-9800

**DATASHEET****Host:** Rabbit**Isotype:** IgG**Clonality:** Polyclonal**GeneID:** 23503**SWISS:** Q68DK2**Target:** ZFYVE26**Immunogen:** KLH conjugated synthetic peptide derived from human ZFYVE26: 2151-2250/2539.**Purification:** affinity purified by Protein A**Concentration:** 1mg/ml**Storage:** 0.01M TBS (pH7.4) with 1% BSA, 0.02% Proclin300 and 50% Glycerol.

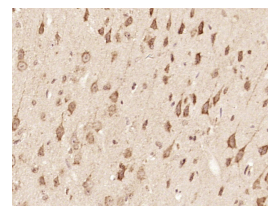
Shipped at 4°C. Store at -20°C for one year. Avoid repeated freeze/thaw cycles.

**Background:** This gene encodes a protein which contains a FYVE zinc finger binding domain. The presence of this domain is thought to target these proteins to membrane lipids through interaction with phospholipids in the membrane. Mutations in this gene are associated with autosomal recessive spastic paraplegia-15. [provided by RefSeq, Oct 2008]**Applications:** **WB** (1:500-2000)**IHC-P** (1:100-500)**IHC-F** (1:100-500)**IF** (1:100-500)**Reactivity:** Human, Mouse  
(predicted: Rat, Rabbit, Pig, Sheep, Cow, Dog, Horse)**Predicted MW.:** 285 kDa**Subcellular Location:** Cytoplasm**VALIDATION IMAGES**

Sample: Brain (Mouse) Lysate at 40 ug U251 (Human) CellLysate at 30 ug U87MG (Human) CellLysate at 30 ug Primary: Anti-ZFYVE26 (bs-19159R) at 1/500 dilution Secondary: IRDye800CW Goat Anti-Rabbit IgG at 1/20000 dilution Predicted band size: 285 kD Observed band size: 285 kD



Sample: Brain (Mouse) Lysate at 40 ug Primary: Anti-ZFYVE26 (bs-19159R) at 1/500 dilution Secondary: IRDye800CW Goat Anti-Rabbit IgG at 1/20000 dilution Predicted band size: 285 kD Observed band size: 285 kD



Paraformaldehyde-fixed, paraffin embedded (mouse brain tissue); Antigen retrieval by boiling in sodium citrate buffer (pH6.0) for 15min; Block endogenous peroxidase by 3% hydrogen peroxide for 20 minutes; Blocking buffer (normal goat serum) at 37°C for 30min; Antibody incubation with (ZFYVE26) Polyclonal Antibody, Unconjugated (bs-19159R) at 1:400 overnight at 4°C, followed by operating according to SP Kit(Rabbit) (sp-0023) instructions and DAB staining.