

bsm-34219M**[Primary Antibody]****BHLHA15 Mouse mAb****Bioss**
ANTIBODIES

www.bioss.com.cn

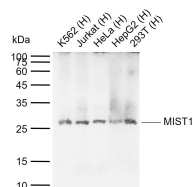
sales@bioss.com.cn

techsupport@bioss.com.cn

400-901-9800

— DATASHEET —

| | | |
|--|-----------------------|---|
| Host: Mouse | Isotype: IgG2a | Applications: WB (1:100-1000) Reactivity: Human (predicted: Mouse, Rat, Pig) Predicted MW.: 21 kDa Subcellular Location: Nucleus |
| Clonality: Monoclonal | CloneNo.: 3C4 | |
| GeneID: 168620 | SWISS: Q7RTS1 | |
| Target: BHLHA15 | | |
| Immunogen: Recombined human BHLHA15 protein: 1-189/189. | | |
| Purification: affinity purified by Protein A | | |
| Concentration: 1mg/ml | | |
| Storage: 0.01M TBS (pH7.4) with 1% BSA, 0.02% Proclin300 and 50% Glycerol. Shipped at 4°C. Store at -20°C for one year. Avoid repeated freeze/thaw cycles. | | |
| Background: Enables sequence-specific double-stranded DNA binding activity. Predicted to be involved in several processes, including cellular response to glucose starvation; endoplasmic reticulum unfolded protein response; and negative regulation of myotube differentiation. Predicted to act upstream of or within several processes, including glucose homeostasis; intracellular distribution of mitochondria; and mitochondrial calcium ion transmembrane transport. Predicted to be part of chromatin. Predicted to be active in nucleus. [provided by Alliance of Genome Resources, Apr 2022] | | |

— VALIDATION IMAGES —

Sample: Lane 1: Human K562 cell lysates Lane 2: Human Jurkat cell lysates Lane 3: Human HeLa cell lysates Lane 4: Human HepG2 cell lysates Lane 5: Human 293T cell lysates Primary: Anti-MIST1 (bsm-34219M) at 1/1000 dilution Secondary: IRDye800CW Goat Anti-Mouse IgG at 1/20000 dilution Predicted band size: 21 kDa Observed band size: 27 kDa