

bs-7997R**[Primary Antibody]****CDKAL1 Rabbit pAb****Bioss**
ANTIBODIES

www.bioss.com.cn

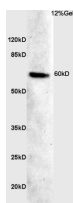
sales@bioss.com.cn

techsupport@bioss.com.cn

400-901-9800

— DATASHEET —

Host: Rabbit	Isotype: IgG	Applications: WB (1:500-2000)
Clonality: Polyclonal		Reactivity: Rat (predicted: Human, Mouse, Pig, Dog, Horse)
GeneID: 68916	SWISS: Q91WE6	
Target: CDKAL1		Predicted MW.: 65 kDa
Immunogen: KLH conjugated synthetic peptide derived from mouse CDKAL1: 375-460/579.		Subcellular Location: Cell membrane
Purification: affinity purified by Protein A		
Concentration: 1mg/ml		
Storage: 0.01M TBS (pH7.4) with 1% BSA, 0.02% Proclin300 and 50% Glycerol. Shipped at 4°C. Store at -20°C for one year. Avoid repeated freeze/thaw cycles.		
Background: The protein encoded by this gene is a member of the methylthiotransferase family. The function of this gene is not known. Genome-wide association studies have linked single nucleotide polymorphisms in an intron of this gene with susceptibility to type 2 diabetes. [provided by RefSeq, May 2010].		

— VALIDATION IMAGES —

Sample: Liver (Rat) Lysate at 40 ug Primary: Anti-CDKAL1 (bs-7997R) at 1/300 dilution Secondary: HRP conjugated Goat-Anti-rabbit IgG (bs-0295G-HRP) at 1/5000 dilution Predicted band size: 65 kD Observed band size: 60 kD