

bs-6404R**[Primary Antibody]****CECR5 Rabbit pAb****BioSS**
ANTIBODIES

www.bioss.com.cn

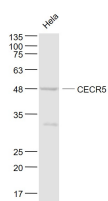
sales@bioss.com.cn

techsupport@bioss.com.cn

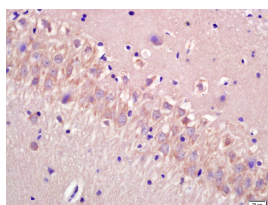
400-901-9800

— DATASHEET —

Host: Rabbit	Isotype: IgG	Applications: WB (1:500-2000) IHC-P (1:100-500) IHC-F (1:100-500) IF (1:100-500) Reactivity: Human, Rat (predicted: Mouse, Rabbit, Pig, Dog, Horse) Predicted MW.: 44 kDa Subcellular Location: Cytoplasm
Clonality: Polyclonal		
GeneID: 27440	SWISS: Q9BXW7	
Target: CECR5		
Immunogen: KLH conjugated synthetic peptide derived from human CECR5: 251-350/423.		
Purification: affinity purified by Protein A		
Concentration: 1mg/ml		
Storage: 0.01M TBS (pH7.4) with 1% BSA, 0.02% Proclin300 and 50% Glycerol. Shipped at 4°C. Store at -20°C for one year. Avoid repeated freeze/thaw cycles.		
Background: CECR5 is widely expressed. There are 2 known isoforms produced by alternative splicing.		

— VALIDATION IMAGES —

Sample: HeLa(Human) Cell Lysate at 30 ug
Primary: Anti- CECR5 (bs-6404R) at 1/1000
dilution Secondary: IRDye800CW Goat Anti-
Rabbit IgG at 1/20000 dilution Predicted band
size: 44 kD Observed band size: 48 kD



Tissue/cell: rat brain tissue; 4%
Paraformaldehyde-fixed and paraffin-
embedded; Antigen retrieval: citrate buffer (0.01M, pH 6.0), Boiling bathing for 15min; Block
endogenous peroxidase by 3% Hydrogen
peroxide for 30min; Blocking buffer (normal goat
serum,C-0005) at 37°C for 20 min; Incubation:
Anti-CECR5 Polyclonal Antibody,
Unconjugated(bs-6404R) 1:200, overnight at 4°C,
followed by conjugation to the secondary
antibody(SP-0023) and DAB(C-0010) staining