

bs-6416R**[Primary Antibody]**

www.bioss.com.cn

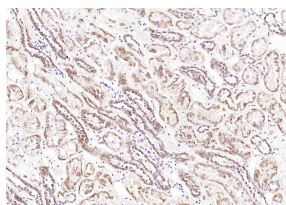
sales@bioss.com.cn

techsupport@bioss.com.cn

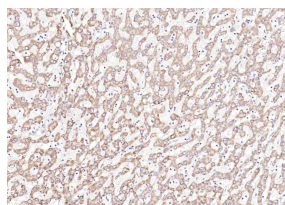
400-901-9800

Complement fragment 3c Rabbit pAb**— DATASHEET —**

Host: Rabbit Clonality: Polyclonal GeneID: 718 Target: Complement fragment 3c Immunogen: KLH conjugated synthetic peptide derived from human Complement C3c alpha' chain fragment 1: 1051-1200/1663. Purification: affinity purified by Protein A Concentration: 1mg/ml Storage: 0.01M TBS (pH7.4) with 1% BSA, 0.02% Proclin300 and 50% Glycerol. Shipped at 4°C. Store at -20°C for one year. Avoid repeated freeze/thaw cycles. Background: The complement factor C3 consists of an alpha and a beta chain. C3 is a central factor in the complement cascade. It is central to the alternative pathway that leads to the C3 convertase C3bBb. The classical mannose binding lectin activation pathway leads to the C3 convertase C4b2a. These convertases cleave C3 resulting in C3a and C3b. Further degradation leads to the formation of the alpha chain products C3d, C3g and C3c. C3 is an acute phase protein that is produced by a wide range of tissues, including renal epithelial cells and hepatocytes.	Isotype: IgG SWISS: P01024	Applications: IHC-P (1:100-500) IHC-F (1:100-500) IF (1:100-500) Reactivity: Human Predicted MW.: 183 kDa Subcellular Location: Secreted
---	---	---

— VALIDATION IMAGES —

Paraformaldehyde-fixed, paraffin embedded Human Kidney; Antigen retrieval by boiling in sodium citrate buffer (pH6.0) for 15 min; Antibody incubation with Complement C3 Polyclonal Antibody, Unconjugated (bs-6416R) at 1:200 overnight at 4°C, followed by conjugation to the bs-0295G-HRP and DAB (C-0010) staining.



Paraformaldehyde-fixed, paraffin embedded Human Liver Cancer; Antigen retrieval by boiling in sodium citrate buffer (pH6.0) for 15 min; Antibody incubation with Complement C3 Polyclonal Antibody, Unconjugated (bs-6416R) at 1:200 overnight at 4°C, followed by conjugation to the bs-0295G-HRP and DAB (C-0010) staining.

— SELECTED CITATIONS —

- **[IF=5.714]** Peng Zhang. et al. Dioscin ameliorates silica-aggravated systemic lupus erythematosus via suppressing apoptosis and improving LC3-associated phagocytosis in MRL/lpr mice. INT IMMUNOPHARMACOL. 2023 Mar;116:109814 IF ;Mouse. 36773568
- **[IF=5.156]** Liu, Tao. et al. Microarray-based analysis of renal complement components reveals a therapeutic target for lupus nephritis. Arthritis Res Ther. 2021 Dec;23(1):1-15 IHC ;Human. 34433493
- **[IF=1.781]** Ehrnthaller C et al. Hemorrhagic shock induces renal complement activation. Eur J Trauma Emerg Surg. 2019 Jul 15. IHC ;Pig. 31309238
- **[IF=0.75]** Vass, A., et al. "Inflammatory Activation after Experimental Cardiac Tamponade." European Surgical Research

Important Note: This product as supplied is intended for research use only, not for use in human, therapeutic or diagnostic applications.

51.1-2 (2013): 1-13. IHC ;="Pig". 10.1159/000352089