

bs-6930R**[Primary Antibody]****SIK2 Rabbit pAb****BioSS**
ANTIBODIES

www.bioss.com.cn

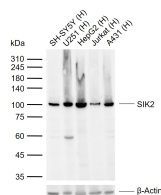
sales@bioss.com.cn

techsupport@bioss.com.cn

400-901-9800

— DATASHEET —

Host: Rabbit Clonality: Polyclonal GeneID: 23235 Target: SIK2 Immunogen: KLH conjugated synthetic peptide derived from human SNF1LK2/SIK2: 281-380/926. Purification: affinity purified by Protein A Concentration: 1mg/ml Storage: 0.01M TBS (pH7.4) with 1% BSA, 0.02% Proclin300 and 50% Glycerol. Shipped at 4°C. Store at -20°C for one year. Avoid repeated freeze/thaw cycles. Background: Phosphorylates 'Ser-794' of IRS1 in insulin-stimulated adipocytes, potentially modulating the efficiency of insulin signal transduction. Inhibits CREB activity by phosphorylating and repressing TORCs, the CREB-specific coactivators.	Isotype: IgG SWISS: Q9H0K1	Applications: WB (1:500-2000) ELISA (1:5000-10000) Reactivity: Human (predicted: Mouse) Predicted MW.: 104 kDa Subcellular Location: Cytoplasm
--	---	--

— VALIDATION IMAGES —

Sample: Lane 1: Human SH-SY5Y cell lysates
Lane 2: Human U251 cell lysates Lane 3: Human HepG2 cell lysates Lane 4: Human Jurkat cell lysates Lane 5: Human A431 cell lysates Primary: Anti-SIK2 (bs-6930R) at 1/1000 dilution Secondary: IRDye800CW Goat Anti-Rabbit IgG at 1/20000 dilution Predicted band size: 104 kDa Observed band size: 100 kDa

— SELECTED CITATIONS —

- **[IF=2.248]** Wei Shunying. et al. Overexpression of circ_CELSR1 facilitates paclitaxel resistance of ovarian cancer by regulating miR-149-5p/SIK2 axis. Anti-Cancer Drug. 2021 Jun;32(5):496-507 WB ;Human. 33735118