

bs-6442R**[Primary Antibody]****CRABP1/Retinol binding protein Rabbit pAb****Bioss**
ANTIBODIES

www.bioss.com.cn

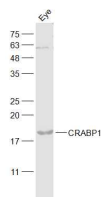
sales@bioss.com.cn

techsupport@bioss.com.cn

400-901-9800

— DATASHEET —

Host: Rabbit	Isotype: IgG	Applications: WB (1:500-2000)
Clonality: Polyclonal		Reactivity: Mouse (predicted: Human, Rat, Rabbit, Pig, Cow, Chicken, Dog)
GeneID: 1381	SWISS: P29762	Predicted MW.: 16 kDa
Target: CRABP1/Retinol binding protein		Subcellular Location: Cytoplasm
Immunogen: KLH conjugated synthetic peptide derived from human Retinol binding protein: 45-135/135.		
Purification: affinity purified by Protein A		
Concentration: 1mg/ml		
Storage: 0.01M TBS (pH7.4) with 1% BSA, 0.02% Proclin300 and 50% Glycerol. Shipped at 4°C. Store at -20°C for one year. Avoid repeated freeze/thaw cycles.		
Background: RBP2 is an abundant protein present in the smallintestinal epithelium. It is thought to participate in the uptakeand/or intracellular metabolism of vitamin A. Vitamin A is afat-soluble vitamin necessary for growth, reproduction,differentiation of epithelial tissues, and vision. RBP2 may alsomodulate the supply of retinoic acid to the nuclei of endometrialcells during the menstrual cycle.		

— VALIDATION IMAGES —

Sample: Eye (Mouse) Lysate at 40 ug Primary:

Anti-CRABP1 (bs-6442R) at 1/1000 dilution

Secondary: IRDye800CW Goat Anti-Rabbit IgG at

1/20000 dilution Predicted band size: 16 kD

Observed band size: 18 kD