

bs-24649R**[Primary Antibody]**

www.bioss.com.cn

sales@bioss.com.cn

techsupport@bioss.com.cn

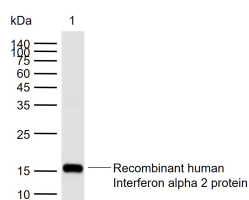
400-901-9800

Interferon alpha 2 Rabbit pAb

— DATASHEET —

Host: Rabbit	Isotype: IgG	Applications: WB (1:500-2000)
Clonality: Polyclonal		Reactivity: Human
GeneID: 3440	SWISS: P01563	
Target: Interferon alpha 2		
Immunogen: KLH conjugated synthetic peptide derived from human Interferon alpha 2: 81-180/188.		Predicted MW.: 19 kDa
Purification: affinity purified by Protein A		Subcellular Location: Secreted
Concentration: 1mg/ml		
Storage: 0.01M TBS (pH7.4) with 1% BSA, 0.02% Proclin300 and 50% Glycerol. Shipped at 4°C. Store at -20°C for one year. Avoid repeated freeze/thaw cycles.		
Background: Interferon alpha 2b is one of the known 23 different variants of IFN-alpha. The individual proteins have molecular masses between 19-26 kDa and consist of proteins with lengths of 156-166 and 172 amino acids. All IFN-alpha subtypes possess a common conserved sequence region between amino acid positions 115-151 while the amino-terminal ends are variable. Many IFN-alpha subtypes differ in their sequences at only one or two positions. Naturally occurring variants also include proteins truncated by 10 amino acids at the carboxy-terminal end. Interferon alpha 2b is a potent immune modulator. It can either inhibit or enhance immune cell activity within the tightly regulated microenvironment of inflammation, depending upon the concentration of the cytokine and the activation stage of the cell. Interferon alpha 2B is currently used as an anticancer drug due to its antiproliferative activity.		

— VALIDATION IMAGES —



Sample: Lane 1: Recombinant human Interferon alpha 2 protein, N-His(bs-42261P) Primary: Anti-Interferon alpha 2 (bs-24649R) at 1/1000 dilution
Secondary: IRDye800CW Goat Anti-Rabbit IgG at 1/20000 dilution Predicted band size: 19 kDa
Observed band size: 16 kDa