

bs-14299R**[Primary Antibody]****DGKI Rabbit pAb****BioSS**
ANTIBODIES

www.bioss.com.cn

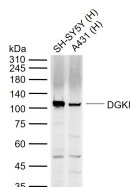
sales@bioss.com.cn

techsupport@bioss.com.cn

400-901-9800

— DATASHEET —

Host: Rabbit	Isotype: IgG	Applications: WB (1:500-2000)
Clonality: Polyclonal		Reactivity: Human
GeneID: 9162	SWISS: O75912	
Target: DGKI		
Immunogen: KLH conjugated synthetic peptide derived from human DGKI: 101-200/1065.		Predicted MW.: 117 kDa
Purification: affinity purified by Protein A		Subcellular Location: Cytoplasm ,Nucleus
Concentration: 1mg/ml		
Storage: 0.01M TBS (pH7.4) with 1% BSA, 0.02% Proclin300 and 50% Glycerol. Shipped at 4°C. Store at -20°C for one year. Avoid repeated freeze/thaw cycles.		
Background: This gene is a member of the type IV diacylglycerol kinase subfamily. Diacylglycerol kinases regulate the intracellular concentration of diacylglycerol through its phosphorylation, producing phosphatidic acid. The specific role of the enzyme encoded by this gene is undetermined, however, it may play a crucial role in the production of phosphatidic acid in the retina or in recessive forms of retinal degeneration. [provided by RefSeq, Jul 2008]		

— VALIDATION IMAGES —

Sample: Lane 1: Human SH-SY5Y cell lysates
Lane 2: Human A431 cell lysates Primary: Anti-DGKI (bs-14299R) at 1/1000 dilution Secondary: IRDye800CW Goat Anti-Rabbit IgG at 1/20000 dilution Predicted band size: 117 kDa Observed band size: 115 kDa