

alpha Internexin Rabbit pAb

Catalog Number: bs-42003R

Target Protein: alpha Internexin

Concentration: 1mg/ml

Form: Liquid

Host: Rabbit

Clonality: Polyclonal

Isotype: IgG

Applications: WB (1:500-2000), ELISA (1:5000-10000)

Reactivity: Human, Mouse, Rat

Predicted MW: 55 kDa

Entrez Gene: 9118

Swiss Prot: Q16352

Source: Recombinant human Alpha-internexin protein: 1-499/499.

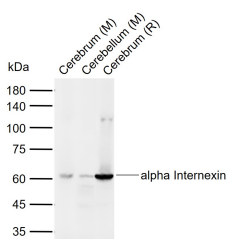
Purification: affinity purified by Protein A

Storage: 0.01M TBS (pH7.4) with 1% BSA, 0.02% Proclin300 and 50% Glycerol.

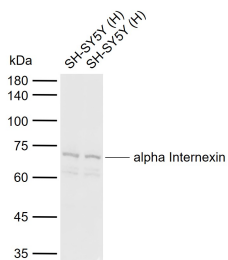
Shipped at 4°C. Store at -20°C for one year. Avoid repeated freeze/thaw cycles.

Background: eurofilaments are type IV intermediate filament heteropolymers composed of light, medium, and heavy chains. Neurofilaments comprise the axoskeleton and they functionally maintain the neuronal caliber. They may also play a role in intracellular transport to axons and dendrites. This gene is a member of the intermediate filament family and is involved in the morphogenesis of neurons. [provided by RefSeq, Jun 2009]

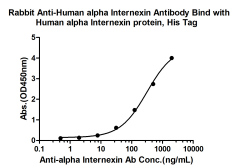
VALIDATION IMAGES



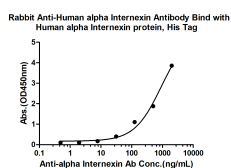
Sample: Lane 1: Mouse Cerebrum tissue lysates Lane 2: Mouse Cerebellum tissue lysates Lane 3: Rat Cerebrum tissue lysates Primary: Anti-alpha Internexin (bs-42003R) at 1/1000 dilution Secondary: IRDye800CW Goat Anti-Rabbit IgG at 1/20000 dilution Predicted band size: 55 kDa Observed band size: 60 kDa



Sample: Lane 1: Human SH-SY5Y cell lysates Lane 2: Human SH-SY5Y cell lysates Primary: Anti-alpha Internexin (bs-42003R) at 1/1000 dilution Secondary: IRDye800CW Goat Anti-Rabbit IgG at 1/20000 dilution Predicted band size: 55 kDa Observed band size: 66 kDa



Measured by its binding ability in a indirect ELISA. Immobilized Human alpha Internexin protein, His Tag (Cat. bs-42003P) at 2 µg/mL (100 µL/well) can bind Rabbit Anti-Human alpha Internexin Antibody, the EC50 is 312.5 ng/mL.



Measured by its binding ability in a indirect ELISA. Immobilized Human alpha Internexin protein, His Tag (Cat. bs-42003P) at 2 µg/mL (100 µL/well) can bind Rabbit Anti-Human alpha Internexin Antibody, the EC50 is 911.2 ng/mL.