

bs-55118R**[Primary Antibody]****lamin B1 Rabbit pAb****Bioss**
ANTIBODIES

www.bioss.com.cn

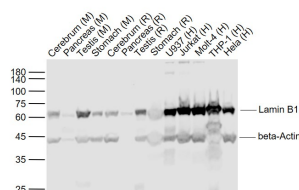
sales@bioss.com.cn

techsupport@bioss.com.cn

400-901-9800

DATASHEET**Host:** Rabbit**Isotype:** IgG**Clonality:** Polyclonal**GeneID:** 4001**SWISS:** P20700**Target:** lamin B1**Immunogen:** Recombinant human Lamin B1: 397-586/586.**Purification:** affinity purified by Protein A**Concentration:** 1mg/ml**Storage:** 0.01M TBS (pH7.4) with 1% BSA, 0.02% Proclin300 and 50% Glycerol.

Store at -20°C for one year. Avoid repeated freeze/thaw cycles. The lyophilized antibody is stable at room temperature for at least one month and for greater than a year when kept at -20°C. When reconstituted in sterile pH 7.4 0.01M PBS or diluent of antibody the antibody is stable for at least two weeks at 2-4°C.

Background: The nuclear lamina consists of a two-dimensional matrix of proteins located next to the inner nuclear membrane. The lamin family of proteins make up the matrix and are highly conserved in evolution. During mitosis, the lamina matrix is reversibly disassembled as the lamin proteins are phosphorylated. Lamin proteins are thought to be involved in nuclear stability, chromatin structure and gene expression. Vertebrate lamins consist of two types, A and B. This gene encodes one of the two B type proteins, B1. Alternative splicing results in transcript variants and a duplication of this gene is associated with autosomal dominant adult-onset leukodystrophy (ADLD). [provided by RefSeq, Oct 2010].**Applications:** **WB** (1:500-2000)**IHC-P** (1:100-500)**IHC-F** (1:100-500)**IF** (1:100-500)**ICC/IF** (1:50-200)**ELISA** (1:5000-10000)**IP** (0.5µg-4µg antibody for 200µg-400µg extracts of whole cells)**ChIP** (5µg antibody for 10µg-15µg of Chromatin)**Reactivity:** Human, Mouse, Rat**Predicted MW.:** 66 kDa**Subcellular Location:** Nucleus**VALIDATION IMAGES**

Sample: Lane 1: Cerebrum (Mouse) Lysate at 40 ug
 Lane 2: Pancreas (Mouse) Lysate at 40 ug
 Lane 3: Testis (Mouse) Lysate at 40 ug
 Lane 4: Stomach (Mouse) Lysate at 40 ug
 Lane 5: Cerebrum (Rat) Lysate at 40 ug
 Lane 6: Testis (Rat) Lysate at 40 ug
 Lane 7: Stomach (Rat) Lysate at 40 ug
 Lane 8: U937 (Human) Cell Lysate at 30 ug
 Lane 9: Jurkat (Human) Cell Lysate at 30 ug
 Lane 10: Molt-4 (Human) Cell Lysate at 30 ug
 Lane 11: THP-1 (Human) Cell Lysate at 30 ug
 Lane 12: Hela (Human) Cell Lysate at 30 ug
 Lane 13: Hela (Human) Cell Lysate at 30 ug
 Primary: Anti- Lamin B1 (bs-55118R) at 1/1000 dilution
 Anti-beta-Actin (bs-0061R) at 1/2000 dilution
 Secondary: IRDye800CW Goat Anti-Rabbit IgG at 1/20000 dilution
 Predicted band size: 67-70 kD
 Observed band size: 65 kD

SELECTED CITATIONS

Important Note: This product as supplied is intended for research use only, not for use in human, therapeutic or diagnostic applications.

- **[IF=3.1]** Zihao Zhao. et al. Groenlandicine enhances cisplatin sensitivity in cisplatin-resistant osteosarcoma cells through the BAX/Bcl-2/Caspase-9/Caspase-3 pathway. J BONE ONCOL. 2024 Oct;48:100631 WB ;Human. 39263651