

**bs-3516R****[ Primary Antibody ]****WBSCR14 Rabbit pAb****BioSS**  
**ANTIBODIES**

www.bioss.com.cn

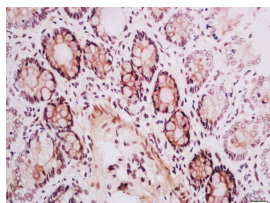
sales@bioss.com.cn

techsupport@bioss.com.cn

400-901-9800

**— DATASHEET —**

<b>Host:</b> Rabbit	<b>Isotype:</b> IgG	<b>Applications:</b> IHC-P (1:100-500) IHC-F (1:100-500) IF (1:100-500)  <b>Reactivity:</b> Rat (predicted: Human, Mouse, Pig, Cow, Chicken, Dog, Horse)  <b>Predicted MW.:</b> 93 kDa  <b>Subcellular Location:</b> Nucleus
<b>Clonality:</b> Polyclonal		
<b>GeneID:</b> 51085	<b>SWISS:</b> Q9NP71	
<b>Target:</b> WBSCR14		
<b>Immunogen:</b> KLH conjugated synthetic peptide derived from human WBSCR14/ChREBP: 81-180/852.		
<b>Purification:</b> affinity purified by Protein A		
<b>Concentration:</b> 1mg/ml		
<b>Storage:</b> 0.01M TBS (pH7.4) with 1% BSA, 0.02% Proclin300 and 50% Glycerol. Shipped at 4°C. Store at -20°C for one year. Avoid repeated freeze/thaw cycles.		
<b>Background:</b> ChREBP (Carbohydrate responsive element binding protein) is a transcription factor playing a critical role in the nutrient and hormonal regulation of genes encoding enzymes of glucose metabolism and lipogenesis pathways. It contains several domains including a nuclear localization signal (NLS) near the N-terminus, polyproline domains, a basic helix-loop-helix leucine zipper (b/HLH/Zip) and a leucine zipper like (zip-like) domain. ChREBP is ubiquitously detected in various tissues, with highest expression in liver, kidney and white and brown adipose tissue. Under basal conditions ChREBP is localized in the cytosol, translocating into the nucleus upon high glucose stimulation following its dephosphorylation of phospho-serine 196.		

**— VALIDATION IMAGES —**

Tissue/cell: rat rectum tissue; 4% Paraformaldehyde-fixed and paraffin-embedded; Antigen retrieval: citrate buffer (0.01M, pH 6.0), Boiling bathing for 15min; Block endogenous peroxidase by 3% Hydrogen peroxide for 30min; Blocking buffer (normal goat serum, C-0005) at 37°C for 20 min; Incubation: Anti-WBSCR14 Polyclonal Antibody, Unconjugated(bs-3516R) 1:200, overnight at 4°C, followed by conjugation to the secondary antibody(SP-0023) and DAB(C-0010) staining