

**bs-20116G**

**[ Primary Antibody ]**

## CSFV E2 Goat pAb

**BioSS**  
ANTIBODIES

www.bioss.com.cn

sales@bioss.com.cn

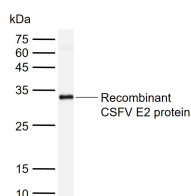
techsupport@bioss.com.cn

400-901-9800

### — DATASHEET —

<b>Host:</b> Goat	<b>Isotype:</b> IgG	<b>Applications:</b> <b>WB</b> (1:500-2000) <b>ELISA</b> (1:5000-10000)
<b>Clonality:</b> Polyclonal		<b>Reactivity:</b> CSFV
<b>Target:</b> CSFV E2		
<b>Purification:</b> affinity purified by Protein A		
<b>Concentration:</b> 1mg/ml		
<b>Storage:</b> Preservative: 0.02% Proclin300, Constituents: 1% BSA, 0.01M PBS, pH7.4. Shipped at 4°C. Store at -20°C for one year. Avoid repeated freeze/thaw cycles.		<b>Predicted MW.:</b> 42 kDa
<b>Background:</b> Classical swine fever(CSF) is a kind of acute and intense contagious disease in swine, it material damages swine industry. CSF could cause swine appearing disseminated hemorrhage in systemic organ and tissue, degeneration and necrosis in small vascular and capillary endothelial cells. Classical swine fever virus (CSFV) belongs to genera Pestivirus, family Flaviviridae, it' s genome total length is 12.3Kb,including a big ORF, encoding 11 structural and nonstructural proteins.		<b>Subcellular Location:</b> Cell membrane

### — VALIDATION IMAGES —



Sample: Lane 1: Recombinant CSFV E2 protein  
Primary: Anti-CSFV E2 (bs-20116G) at 1/1000 dilution  
Secondary: IRDye800CW Donkey anti-Goat IgG at 1/20000 dilution  
Predicted band size: 42 kDa  
Observed band size: 32 kDa