

bs-3529R**[Primary Antibody]****BioSS**
ANTIBODIES

www.bioss.com.cn

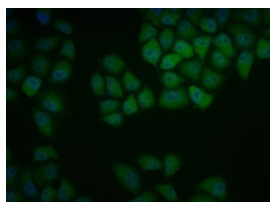
sales@bioss.com.cn

techsupport@bioss.com.cn

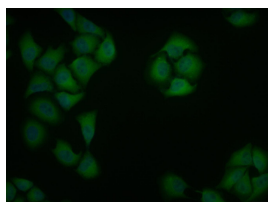
400-901-9800

ID1 Rabbit pAb**— DATASHEET —**

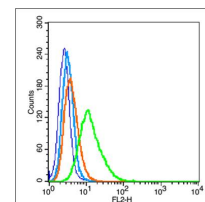
Host: Rabbit Clonality: Polyclonal GeneID: 3397 Target: ID1 Immunogen: KLH conjugated synthetic peptide derived from human ID1: 51-155/155. Purification: affinity purified by Protein A Concentration: 1mg/ml Storage: 0.01M TBS (pH7.4) with 1% BSA, 0.02% Proclin300 and 50% Glycerol. Shipped at 4°C. Store at -20°C for one year. Avoid repeated freeze/thaw cycles. Background: ID proteins contain a helix-loop-helix (HLH) motif and regulate tissue-specific transcription within several cell lineages. They do not bind DNA directly, but inhibit lineage commitment by binding basic helix-loop-helix (bHLH) transcription factors through their HLH motif. ID proteins contribute to cell growth, senescence, differentiation and angiogenesis. Id1 mRNA is highly expressed in heart, lung and kidney and has lower expression in brain and liver. Two transcript variants encoding different isoforms have been found for this gene.	Isotype: IgG SWISS: P41134	Applications: Flow-Cyt (1ug/Test) ICC/IF (1:100) Reactivity: Human, Mouse, Rat (predicted: Rabbit, Pig, Cow, Dog) Predicted MW.: 16 kDa Subcellular Location: Cytoplasm ,Nucleus
---	---	---

— VALIDATION IMAGES —

Hela cell; 4% Paraformaldehyde-fixed; Triton X-100 at room temperature for 20 min; Blocking buffer (normal goat serum, C-0005) at 37°C for 20 min; Antibody incubation with (ID1) polyclonal Antibody, Unconjugated (bs-3529R) 1:100, 90 minutes at 37°C; followed by a conjugated Goat Anti-Rabbit IgG antibody at 37°C for 90 minutes, DAPI (blue, C02-04002) was used to stain the cell nuclei.



Hela cell; 4% Paraformaldehyde-fixed; Triton X-100 at room temperature for 20 min; Blocking buffer (normal goat serum, C-0005) at 37°C for 20 min; Antibody incubation with (ID1) polyclonal Antibody, Unconjugated (bs-3529R) 1:100, 90 minutes at 37°C; followed by a conjugated Goat Anti-Rabbit IgG antibody at 37°C for 90 minutes, DAPI (blue, C02-04002) was used to stain the cell nuclei.



Blank control (blue line): A549 (fixed with 2% paraformaldehyde (10 min) , then permeabilized with 90% ice-cold methanol for 30 min on ice). Primary Antibody (green line): Rabbit Anti-ID1 antibody (bs-3529R), Dilution: 1μg /10⁶ cells; Isotype Control Antibody (orange line): Rabbit IgG . Secondary Antibody (white blue line): Goat anti-rabbit IgG-PE, Dilution: 1μg /test.

— SELECTED CITATIONS —

- **[IF=0.181]** Wang S et al. Insulin-like growth factor-1 inhibits the expression of autophagic ID1 in cerebrovascular endothelial cells. Int J Clin Exp Med 2019;12(8):10486-10493. WB ;Human. ISSN:1940-5901/IJCEM0091146