
MMP14 Rabbit pAb

Catalog Number: bs-0414R

Target Protein: MMP14

Concentration: 1mg/ml

Form: Liquid

Host: Rabbit

Clonality: Polyclonal

Isotype: IgG

Applications: IHC-P (1:100-500), IHC-F (1:100-500), IF (1:100-500)

Reactivity: Human, Rat (predicted:Mouse, Pig, Sheep)

Predicted MW: 54/62 kDa

Entrez Gene: 4323

Swiss Prot: P50281

Source: KLH conjugated synthetic peptide derived from human MMP14: 271-370/582.

Purification: affinity purified by Protein A

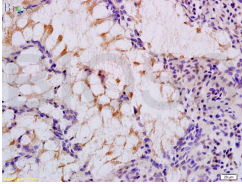
Storage: 0.01M TBS (pH7.4) with 1% BSA, 0.02% Proclin300 and 50% Glycerol.

Shipped at 4°C. Store at -20°C for one year. Avoid repeated freeze/thaw cycles.

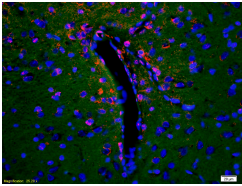
Background: MMP14 may be an activator of pro gelatinase A and is expressed in fibroblast cells during both wound healing and human cancer progression. MMP14 is expressed in very low levels and may require stimulation with concanavalin A or the phorbol ester TPA to stimulate production of MMP14.

Matrix metalloproteinase-14 precursor is endopeptidase that degrades various components of the extracellular matrix, such as collagen. Activates progelatinase A. Essential for pericellular collagenolysis and modeling of skeletal and extraskelatal connective tissues during development. [Catalytic activity] Endopeptidase activity. Activates progelatinase A by cleavage of the propeptide at 37-Asn-|-Leu-38. Other bonds hydrolyzed include 35-Gly-|-Ile-36 in the propeptide of collagenase 3, and 341-Asn-|-Phe-342, 441-Asp-|-Leu-442 and 354-Gln-|-Thr-355 in the aggrecan interglobular domain. Highly expressed in placenta, kidney, heart, lung, embryonic skeletal and periskeletal tissues. Belongs to the peptidase M10A family.

VALIDATION IMAGES



Tissue/cell: Human colon carcinoma; 4% Paraformaldehyde-fixed and paraffin-embedded; Antigen retrieval: citrate buffer (0.01M, pH 6.0), Boiling bathing for 15min; Block endogenous peroxidase by 3% Hydrogen peroxide for 30min; Blocking buffer (normal goat serum,C-0005) at 37°C for 20 min; Incubation: Anti-MMP-14 Polyclonal Antibody, Unconjugated(bs-0414R) 1:200, overnight at 4°C, followed by conjugation to the secondary antibody(SP-0023) and DAB(C-0010) staining



Tissue/cell: rat brain tissue;4% Paraformaldehyde-fixed and paraffin-embedded; Antigen retrieval: citrate buffer (0.01M, pH 6.0), Boiling bathing for 15min; Blocking buffer (normal goat serum,C-0005) at 37°C for 20 min; Incubation: Anti-MMP-14 Polyclonal Antibody, Unconjugated(bs-0414R) 1:200, overnight at 4°C; The secondary antibody was Goat Anti-Rabbit IgG, Cy3 conjugated(bs-0295G-Cy3)used at 1:200 dilution for 40 minutes at 37°C. DAPI(5ug/ml,blue,C-0033) was used to stain the cell nuclei