

**bs-11707R****[ Primary Antibody ]****phospho-ATM (Tyr170) Rabbit pAb****Bioss**  
ANTIBODIES

www.bioss.com.cn

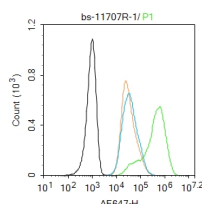
sales@bioss.com.cn

techsupport@bioss.com.cn

400-901-9800

**— DATASHEET —**

<b>Host:</b> Rabbit <b>Clonality:</b> Polyclonal <b>GeneID:</b> 472 <b>Target:</b> ATM (Tyr170) <b>Immunogen:</b> KLH conjugated synthesised phosphopeptide derived from human ATM around the phosphorylation site of Tyr170: SV(p-Y)FR. <b>Purification:</b> affinity purified by Protein A <b>Concentration:</b> 1mg/ml <b>Storage:</b> 0.01M TBS (pH7.4) with 1% BSA, 0.02% Proclin300 and 50% Glycerol. Shipped at 4°C. Store at -20°C for one year. Avoid repeated freeze/thaw cycles. <b>Background:</b> ATM is a 370 kDa nuclear phosphoprotein involved in the autosomal recessive disease Ataxia Telangiectasia (AT). ATM belongs to a novel family of proteins associated with cell cycle regulation, apoptosis, and response to DNA damage repair (DNA damage caused by such things as ionizing irradiation activates ATM kinase). The C terminal region has extensive homology to the catalytic domains of Phosphatidylinositol 3 kinases (PI3 kinases).	<b>Isotype:</b> IgG  <b>SWISS:</b> Q13315	<b>Applications:</b> Flow-Cyt (1ug/Test)  <b>Reactivity:</b> Human (predicted: Mouse, Rat)  <b>Predicted MW.:</b> 370 kDa  <b>Subcellular Location:</b> Cytoplasm ,Nucleus
---	---	--

**— VALIDATION IMAGES —**

Blank control: HeLa. Primary Antibody (green line): Rabbit Anti-phospho-ATM (Tyr170) antibody (bs-11707R) Dilution: 1µg /10<sup>6</sup> cells; Isotype Control Antibody (orange line): Rabbit IgG . Secondary Antibody : Goat anti-rabbit IgG-AF647 Dilution: 1µg /test. Protocol The cells were fixed with 4% PFA (10min at room temperature)and then permeabilized with 90% ice-cold methanol for 20 min at -20°C.The cells were then incubated in 5%BSA to block non-specific protein-protein interactions for 30 min at at room temperature .Cells stained with Primary Antibody for 30 min at room temperature. The secondary antibody used for 40 min at room temperature. Acquisition of 20,000 events was performed.