

bs-5067R**[Primary Antibody]****HMGCL Rabbit pAb****Bioss**
ANTIBODIES

www.bioss.com.cn

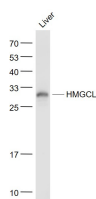
sales@bioss.com.cn

techsupport@bioss.com.cn

400-901-9800

— DATASHEET —

Host: Rabbit	Isotype: IgG	Applications: WB (1:500-2000)
Clonality: Polyclonal		
GeneID: 3155	SWISS: P35914	
Target: HMGCL		
Immunogen: KLH conjugated synthetic peptide derived from human HMGCL: 41-140/325.		
Purification: affinity purified by Protein A		Reactivity: Mouse (predicted: Human, Rat, Rabbit, Chicken, Dog, Horse)
Concentration: 1mg/ml		
Storage: 0.01M TBS (pH7.4) with 1% BSA, 0.02% Proclin300 and 50% Glycerol. Shipped at 4°C. Store at -20°C for one year. Avoid repeated freeze/thaw cycles.		
Background: Hydroxymethylglutaryl-CoA lyase (HMGCL) is found in fibroblasts, liver and lymphoblasts. It has a role in ketogenesis and leucine catabolism. Defects in HMGCL are the cause of 3-hydroxy-3-methylglutaryl-CoA lyase deficiency (hydroxymethylglutaricaciduria), an autosomal recessive disease which can lead to hypoglycemia and coma.		
		Predicted MW.: 32 kDa
		Subcellular Location: Cytoplasm

— VALIDATION IMAGES —

Sample: Liver (Mouse) Lysate at 40 ug Primary:
Anti- HMGCL (bs-5067R) at 1/1000 dilution
Secondary: IRDye800CW Goat Anti-Rabbit IgG at
1/20000 dilution Predicted band size: 32 kD
Observed band size: 30 kD