

bs-10107R**[Primary Antibody]****phospho-Tau (Ser739) Rabbit pAb****BioSS**
ANTIBODIES

www.bioss.com.cn

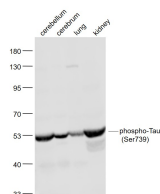
sales@bioss.com.cn

techsupport@bioss.com.cn

400-901-9800

— DATASHEET —

<p>Host: Rabbit</p> <p>Clonality: Polyclonal</p> <p>GeneID: 4137</p> <p>Target: phospho-Tau (Ser739)</p> <p>Immunogen: KLH conjugated Synthesised phosphopeptide derived from human Tau around the phosphorylation site of Ser739: VD(p-S)PQ.</p> <p>Purification: affinity purified by Protein A</p> <p>Concentration: 1mg/ml</p> <p>Storage: 0.01M TBS (pH7.4) with 1% BSA, 0.02% Proclin300 and 50% Glycerol. Shipped at 4°C. Store at -20°C for one year. Avoid repeated freeze/thaw cycles.</p> <p>Background: Tau proteins are important Promotes microtubule assembly and stability, and might be involved in the establishment and maintenance of neuronal polarity. The C-terminus binds axonal microtubules while the N-terminus binds neural plasma membrane components, suggesting that tau functions as a linker protein between both. Axonal polarity is predetermined by tau localization (in the neuronal cell) in the domain of the cell body defined by the centrosome. The short isoforms allow plasticity of the cytoskeleton whereas the longer isoforms may preferentially play a role in its stabilization. Tau proteins subcellular located in the axons of neurons, in the cytosol and in association with plasma membrane components. It expressed in neurons. PNS-tau is expressed in the peripheral nervous system while the others are expressed in the central nervous system.</p>	<p>Applications: WB (1:500-2000) IHC-P (1:100-500) IHC-F (1:100-500) IF (1:100-500)</p> <p>Reactivity: Human, Mouse, Rat (predicted: Rabbit, Cow, Dog)</p> <p>Predicted MW.: 83 kDa</p> <p>Subcellular Location: Cell membrane ,Cytoplasm</p>
---	---

— VALIDATION IMAGES —

Sample: Cerebellum (Mouse) Lysate at 40 ug
Cerebrum (Rat) Lysate at 40 ug Lung (Mouse)
Lysate at 40 ug Kidney (Mouse) Lysate at 40 ug
Primary: Anti- phospho-Tau (Ser739) (bs-10107R)
at 1/1000 dilution Secondary: IRDye800CW Goat
Anti-Rabbit IgG at 1/20000 dilution Predicted
band size: 83 kD Observed band size: 52 kD