

**bs-11437R****[ Primary Antibody ]****BioSS**  
**ANTIBODIES**

www.bioss.com.cn

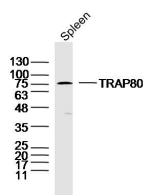
sales@bioss.com.cn

techsupport@bioss.com.cn

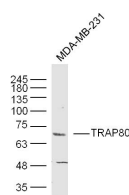
400-901-9800

**TRAP80 Rabbit pAb****— DATASHEET —**

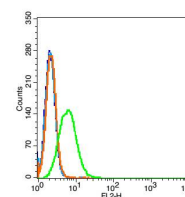
<b>Host:</b> Rabbit	<b>Isotype:</b> IgG	<b>Applications:</b> <b>WB</b> (1:500-2000) <b>Flow-Cyt</b> (1µg/Test)
<b>Clonality:</b> Polyclonal		
<b>GeneID:</b> 9440	<b>SWISS:</b> Q9NVC6	<b>Reactivity:</b> Human, Mouse (predicted: Rat, Rabbit, Pig, Sheep, Cow, Chicken, Dog, Horse)
<b>Target:</b> TRAP80		<b>Predicted MW.:</b> 73 kDa
<b>Immunogen:</b> KLH conjugated synthetic peptide derived from human TRAP80: 181-280/651.		<b>Subcellular Location:</b> Nucleus
<b>Purification:</b> affinity purified by Protein A		
<b>Concentration:</b> 1mg/ml		
<b>Storage:</b> 0.01M TBS (pH7.4) with 1% BSA, 0.02% Proclin300 and 50% Glycerol. Shipped at 4°C. Store at -20°C for one year. Avoid repeated freeze/thaw cycles.		
<b>Background:</b> In mammalian cells, transcription is regulated in part by high molecular weight coactivating complexes that mediate signals between transcriptional activators and RNA polymerase (1). These complexes include CRSP (for cofactor required for Sp1 activation), which is required, in conjunction with TAFIIs, for transcriptional activation by Sp1 (2). CRSP is ubiquitously expressed in various tissues and functions as a multimeric complex that consists of nine distinct subunits (3). Several members of the CRSP family share sequence similarity with multiple components of the yeast transcriptional mediator proteins, including CRSP150, which is related to yeast Rgr1, and CRSP70, which is similar to the elongation factor TFIIS (4). CRSP77 and CRSP150 are also related to proteins within the putative murine mediator complex, while CRSP130 and CRSP34 are largely unrelated to either murine or yeast proteins (2,5). CRSP subunits also associate with larger multimeric coactivator complexes, including ARC/DRI, which binds directly to SREBP and nuclear hormone receptors to facilitate transcription, and with NAT, a polymerase II-interacting complex that represses activated transcription (6,7).		

**— VALIDATION IMAGES —**

Sample: spleen(mouse) Lysate at 40 ug Primary:  
Anti-TRAP80 (bs-11437R) at 1/300 dilution  
Secondary: IRDye800CW Goat Anti-Rabbit IgG at  
1/20000 dilution Predicted band size: 73kD  
Observed band size: 75 kD



Sample: MDA-MB-231 Cell (Human) Lysate at 40  
ug Primary: Anti-TRAP80 (bs-11437R) at 1/300  
dilution Secondary: IRDye800CW Goat Anti-  
Rabbit IgG at 1/20000 dilution Predicted band  
size: 73 kD Observed band size: 73 kD



Blank control (blue line): Hela(fixed with pre-  
warmed 4% paraformaldehyde for 30min at 37°C  
and then permeabilized with 90% ice-cold  
methanol for 30 min on ice) Primary Antibody  
(green line): Rabbit Anti-TRAP80 antibody  
(bs-11437R),ilution: 0.2µg /10<sup>6</sup> cells; Isotype  
Control Antibody (orange line): Rabbit IgG .  
Secondary Antibody (white blue line): Goat anti-  
rabbit IgG-PE,Dilution: 1µg /test.