

## Phospho-Numb (Ser276) Rabbit pAb

Catalog Number: bs-3311R

Target Protein: Phospho-Numb (Ser276)

Concentration: 1mg/ml

Form: Liquid

Host: Rabbit

Clonality: Polyclonal

Isotype: IgG

Applications: WB (1:500-2000)

Reactivity: Human, Mouse, Rat (predicted: Rabbit, Pig, Sheep, Cow, Chicken, Dog, Horse)

Predicted MW: 70 kDa

Entrez Gene: 8650

Swiss Prot: P49757

Source: KLH conjugated Synthesised phosphopeptide derived from human Numb around the phosphorylation site of Ser276: QG(p-S)FR.

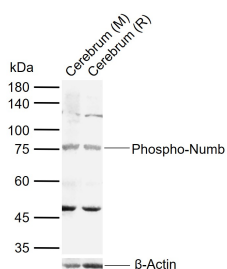
Purification: affinity purified by Protein A

Storage: 0.01M TBS (pH7.4) with 1% BSA, 0.02% Proclin300 and 50% Glycerol.

Shipped at 4°C. Store at -20°C for one year. Avoid repeated freeze/thaw cycles.

**Background:** The protein encoded by this gene plays a role in the determination of cell fates during development. The encoded protein, whose degradation is induced in a proteasome-dependent manner by MDM2, is a membrane-bound protein that has been shown to associate with EPS15, LNX1, and NOTCH1. Four transcript variants encoding different isoforms have been found for this gene. [provided by RefSeq].

### VALIDATION IMAGES



Sample: Lane 1: Mouse Cerebrum tissue lysates Lane 2: Rat Cerebrum tissue lysates Primary: Anti-Phospho-Numb (Ser276) (bs-3311R) at 1/1000 dilution Secondary: IRDye800CW Goat Anti-Rabbit IgG at 1/20000 dilution Predicted band size: 70 kDa Observed band size: 75 kDa

## PRODUCT SPECIFIC PUBLICATIONS

---

[IF=5.37] Mah, In Kyoung, et al. "Atypical PKC-iota Controls Stem Cell Expansion via Regulation of the Notch Pathway." Stem Cell Reports (2015). WB ; ="Mouse" . 26527382