

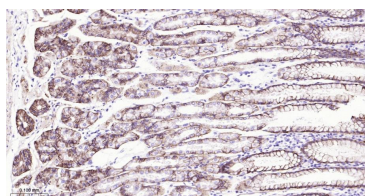
**bsm-60637R****[ Primary Antibody ]****Claudin 18.2 Recombinant Rabbit mAb****BioSS**  
**ANTIBODIES**

www.bioss.com.cn

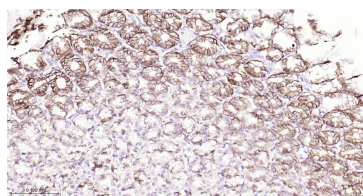
sales@bioss.com.cn

techsupport@bioss.com.cn

400-901-9800

**— DATASHEET —****Host:** Rabbit**Clonality:** Recombinant**GeneID:** 51208**Target:** Claudin 18.2**Purification:** affinity purified by Protein A**Concentration:** 1mg/ml**Storage:** 0.01M TBS (pH7.4) with 1% BSA, 0.02% Proclin300 and 50% Glycerol.  
Shipped at 4°C. Store at -20°C for one year. Avoid repeated freeze/thaw cycles.**Background:** The Claudin superfamily consists of many structurally related proteins in humans (1). These proteins are important structural and functional components of tight junctions in paracellular transport (1,2). Claudins are located in both epithelial and endothelial cells in all tight junction-bearing tissues (1). Three classes of proteins are known to localize to tight junctions, including the Claudins, Occludin and Junction adhesion molecule (3). Claudins, which consist of four transmembrane domains and two extracellular loops make up tight junction strands (4). Emerging evidence suggests that the Claudin family of proteins regulates transport through tight junctions via differential discrimination for solute size and charge (5). Claudin expression is often highly restricted to specific regions of different tissues and may have an important role in transcellular transport through tight junctions (6).**Isotype:** IgG**CloneNo.:** R7G12**SWISS:** P56856**Applications:** IHC-P (1:100-500)**IHC-F** (1:100-500)**IF** (1:100-500)**Reactivity:** Human, Mouse, Rat**Predicted  
MW.:** 28 kDa**Subcellular  
Location:** Cell membrane**— VALIDATION IMAGES —**

Paraformaldehyde-fixed, paraffin embedded Human Fundus; Antigen retrieval by boiling in sodium citrate buffer (pH6.0) for 15 min; Antibody incubation with Claudin 18.2 Monoclonal Antibody, Unconjugated(bsm-60637R) at 1:300 overnight at 4°C, followed by conjugation to the bs-0295G-HRP and DAB (C-0010) staining.



Paraformaldehyde-fixed, paraffin embedded Rat Stomach; Antigen retrieval by boiling in sodium citrate buffer (pH6.0) for 15 min; Antibody incubation with Claudin 18.2 Monoclonal Antibody, Unconjugated(bsm-60637R) at 1:300 overnight at 4°C, followed by conjugation to the bs-0295G-HRP and DAB (C-0010) staining.