

Shiga-like toxin IIe variant subunit A Rabbit pAb

Catalog Number: bs-0882R

Target Protein: Shiga-like toxin IIe variant subunit A

Concentration: 1mg/ml

Form: Liquid

Host: Rabbit

Clonality: Polyclonal

Isotype: IgG

Applications: WB (1:500-2000)

Reactivity: Escherichia Coli

Predicted MW: 36 kDa

Source: KLH conjugated synthetic peptide derived from E.coli Shiga-like toxin IIe variant subunit A: 241-319/319.

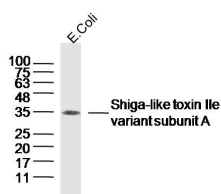
Purification: affinity purified by Protein A

Storage: 0.01M TBS (pH7.4) with 1% BSA, 0.02% Proclin300 and 50% Glycerol.

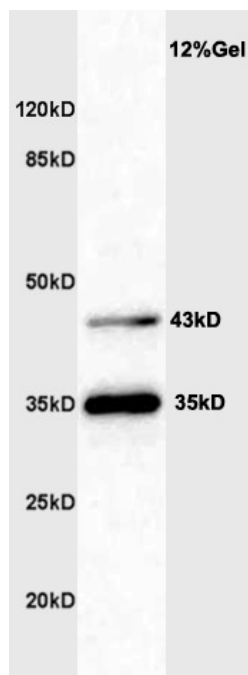
Shipped at 4°C. Store at -20°C for one year. Avoid repeated freeze/thaw cycles.

Background: This antibody reacts with Escherichia coli, Escherichia coli is a gram negative bacillus that belongs to a larger group of Enterobacteriaceae - bacteria that inhabit the gastrointestinal tract. Although usually a harmless resident of the gut, some strains have the potential to cause serious problems, especially where there is an immature immune system or immunosuppression, or where the subtype of organism has acquired the ability to produce pathogenic toxins.

VALIDATION IMAGES



Sample: Escherichia Coli at 30ug Primary: Anti-Shiga-like toxin IIe variant subunit A (bs-0882R) at 1:300 dilution; Secondary: HRP conjugated Goat-Anti-Rabbit IgG(bse-0295G) at 1: 3000 dilution; Predicted band size : 36kD Observed band size : 35kD



Sample: Escherichia Coli at 30ug Primary: Anti- Shiga-like toxin Ile variant subunit A (bs-0882R) at 1:300 dilution; Secondary: HRP conjugated Goat-Anti-Rabbit IgG(bse-0295G) at 1: 3000 dilution; Predicted band size : 36kD Observed band size : 35kD