

bs-41181R**[Primary Antibody]****NSE Rabbit pAb****Bioss**
ANTIBODIES

www.bioss.com.cn

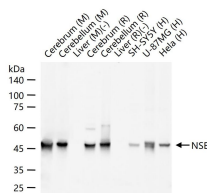
sales@bioss.com.cn

techsupport@bioss.com.cn

400-901-9800

— DATASHEET —

Host: Rabbit	Isotype: IgG	Applications: WB (1:500-2000)
Clonality: Polyclonal		Reactivity: Human, Mouse, Rat
GeneID: 2026	SWISS: P09104	
Target: NSE		
Immunogen: Recombinant human NSE : 1-434/434.		Predicted MW.: 48 kDa
Purification: affinity purified by Protein A		Subcellular Location: Cell membrane ,Cytoplasm
Concentration: 1mg/ml		
Storage: 0.01M TBS (pH7.4) with 1% BSA, 0.02% Proclin300 and 50% Glycerol. Shipped at 4°C. Store at -20°C for one year. Avoid repeated freeze/thaw cycles.		
Background: This gene encodes one of the three enolase isoenzymes found in mammals. This isoenzyme, a homodimer, is found in mature neurons and cells of neuronal origin. A switch from alpha enolase to gamma enolase occurs in neural tissue during development in rats and primates. [provided by RefSeq, Jul 2008].		

— VALIDATION IMAGES —

25 ug total protein per lane of various lysates (see on figure) probed with NSE polyclonal antibody, unconjugated (bs-41181R) at 1:1000 dilution and 4°C overnight incubation. Followed by conjugated secondary antibody incubation at r.t. for 60 min.