

## KT3-Tag Mouse mAb

Catalog Number: bsm-33015M

Target Protein: KT3-Tag

Concentration: 1mg/ml

Form: Size : 100ul/500ul

Liquid

Size : 200ug (PBS only)

Lyophilized

Note: Centrifuge tubes before opening. Reconstitute the lyophilized product in distilled water. Optimal concentration should be determined by the end user.

Host: Mouse

Clonality: Monoclonal

Clone No.: 5E10

Isotype: IgG

Applications: WB (1:1000-5000)

Reactivity: Species independent

Purification: affinity purified by Protein A

Storage: Size : 100ul/500ul

0.01M TBS (pH7.4) with 1% BSA, 0.02% Proclin300 and 50% Glycerol.

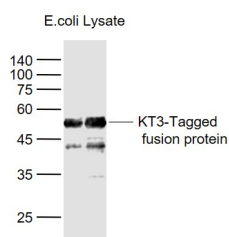
Size : 200ug (PBS only)

0.01M PBS

Shipped at 4°C. Store at -20°C for one year. Avoid repeated freeze/thaw cycles.

Background: KT3 epitope tag can be used to monitor expression of the protein products transfected with cDNA constructs.

### VALIDATION IMAGES



Sample: Lane 1: KT3-Tagged Fusion Protein Overexpression E.coli Lysate (Cat#: bs-41403P) at 2ug Lane 2: KT3-Tagged Fusion Protein Overexpression E.coli Lysate (Cat#: bs-41403P) at 4ug Primary: Anti-KT3-Tag (bsm-33015M) at 1/1000 dilution Secondary: IRDye800CW Goat Anti-Mouse IgG at 1/20000 dilution Predicted band size: 51 kD Observed band size: 51 kD