

bs-3310R**[Primary Antibody]****Phospho-NPM (Thr199) Rabbit pAb****Bioss**
ANTIBODIES

www.bioss.com.cn

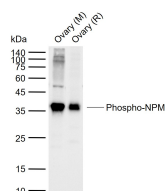
sales@bioss.com.cn

techsupport@bioss.com.cn

400-901-9800

DATASHEET

Host: Rabbit	Isotype: IgG	Applications: WB (1:500-2000)
Clonality: Polyclonal		
GeneID: 4869	SWISS: P06748	
Target: Phospho-NPM (Thr199)		
Immunogen: KLH conjugated Synthesised phosphopeptide derived from human NPM around the phosphorylation site of Thr199: RD(p-T)PA.		
Purification: affinity purified by Protein A		
Concentration: 1mg/ml		
Storage: 0.01M TBS (pH7.4) with 1% BSA, 0.02% Proclin300 and 50% Glycerol. Shipped at 4°C. Store at -20°C for one year. Avoid repeated freeze/thaw cycles.		Reactivity: Mouse, Rat (predicted: Human, Rabbit, Pig, Sheep, Cow, Chicken, Dog, Horse)
Background: This gene encodes a phosphoprotein which moves between the nucleus and the cytoplasm. The gene product is thought to be involved in several processes including regulation of the ARF/p53 pathway. A number of genes are fusion partners have been characterized, in particular the anaplastic lymphoma kinase gene on chromosome 2. Mutations in this gene are associated with acute myeloid leukemia. More than a dozen pseudogenes of this gene have been identified. Alternative splicing results in multiple transcript variants.[provided by RefSeq, Nov 2009].		Predicted MW.: 38 kDa
		Subcellular Location: Nucleus

VALIDATION IMAGES

Sample: Lane 1: Mouse Ovary tissue lysates Lane
2: Rat Ovary tissue lysates Primary: Anti-
Phospho-NPM (Thr199) (bs-3310R) at 1/1000
dilution Secondary: IRDye800CW Goat Anti-
Rabbit IgG at 1/20000 dilution Predicted band
size: 38 kDa Observed band size: 36 kDa