

## PRSS42 Rabbit pAb

Catalog Number: bs-19442R

Target Protein: PRSS42

Concentration: 1mg/ml

Form: Liquid

Host: Rabbit

Clonality: Polyclonal

Isotype: IgG

Applications: **WB** (1:500-2000)

Reactivity: Human

Predicted MW: 32 kDa

Subcellular Secreted

Locations:

Entrez Gene: 339906

Swiss Prot: Q7Z5A4

Source: KLH conjugated synthetic peptide derived from human PRSS42: 81-180/293.

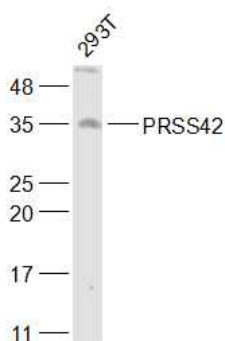
Purification: affinity purified by Protein A

Storage: 0.01M TBS (pH7.4) with 1% BSA, 0.02% Proclin300 and 50% Glycerol.

Shipped at 4°C. Store at -20°C for one year. Avoid repeated freeze/thaw cycles.

Background: PRSS42 (Protease, Serine 42) is a Protein Coding gene. GO annotations related to this gene include serine-type endopeptidase activity. An important paralog of this gene is PRSS21.

### VALIDATION IMAGES



Sample: 293T(Human) Cell Lysate at 30 ug Primary: Anti-PRSS42 (bs-19442R) at 1/1000 dilution Secondary: IRDye800CW Goat Anti-Rabbit IgG at 1/20000 dilution Predicted band size: 32 kD Observed band size: 35 kD