

bs-21571R**[Primary Antibody]****NPY1R Rabbit pAb****BioSS**
ANTIBODIES

www.bioss.com.cn

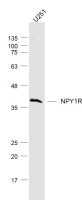
sales@bioss.com.cn

techsupport@bioss.com.cn

400-901-9800

— DATASHEET —

| | | |
|---|----------------------|---|
| Host: Rabbit | Isotype: IgG | Applications: WB (1:500-2000) |
| Clonality: Polyclonal | | Reactivity: Human (predicted: Mouse, Rat, Rabbit, Chicken, Dog, Horse) |
| GeneID: 4886 | SWISS: P25929 | |
| Target: NPY1R | | Predicted MW.: 44 kDa |
| Immunogen: KLH conjugated synthetic peptide derived from human NPY1R : 311-384/384. | | Subcellular Location: Cell membrane |
| Purification: affinity purified by Protein A | | |
| Concentration: 1mg/ml | | |
| Storage: 0.01M TBS (pH7.4) with 1% BSA, 0.02% Proclin300 and 50% Glycerol. Shipped at 4°C. Store at -20°C for one year. Avoid repeated freeze/thaw cycles. | | |
| Background: Neuropeptide Y (NPY) is one of the most abundant neuropeptides in the mammalian nervous system and exhibits a diverse range of important physiologic activities, including effects on psychomotor activity, food intake, regulation of central endocrine secretion, and potent vasoactive effects on the cardiovascular system. There are two major subtypes of NPY (Y1 and Y2). The NPY Y1 receptors have been identified in a variety of tissues, including brain, spleen, small intestine, kidney, testis, placenta, breast, colon, ganglion, heart, and aortic smooth muscle. The Y2 receptor is found mainly in the central nervous system. NPY receptors are a member of the G protein-coupled receptor superfamily. | | |

— VALIDATION IMAGES —

Sample: U251 (Human) Cell Lysate at 30 ug
Primary: Anti-NPY1R (bs-21571R) at 1/1000
dilution Secondary: IRDye800CW Goat Anti-
Rabbit IgG at 1/20000 dilution Predicted band
size: 44 kD Observed band size: 44 kD